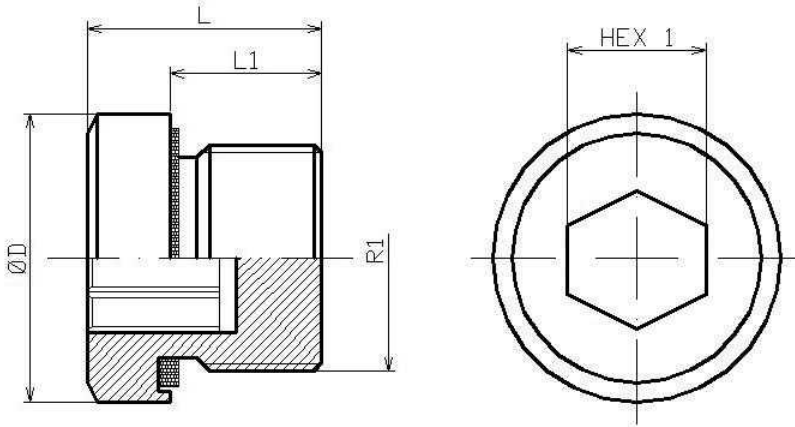


DIN 2353 Pipe fittings
Plugs

Blanking plug with captive seal BSP cylindrical

Stainless Steel AISI 316



Part n°	R1	Working Pressure (bar)	L	L1	HEX 1	ØD
XTMBORG02	1/8" BSP	400	12	8	5	14
XTMBORG04	1/4" BSP	400	17	12	6	19
XTMBORG06	3/8" BSP	400	17	12	8	22
XTMBORG08	1/2" BSP	400	19	14	10	26.9
XTMBORG12	3/4" BSP	400	21	16	12	32
XTMBORG16	1" BSP	400	24.5	18	17	40
XTMBORG20	1"1/4 BSP	250	24.5	18	24	55
XTMBORG24	1"1/2 BSP	250	24.5	18	22	50

Captive seal FKM