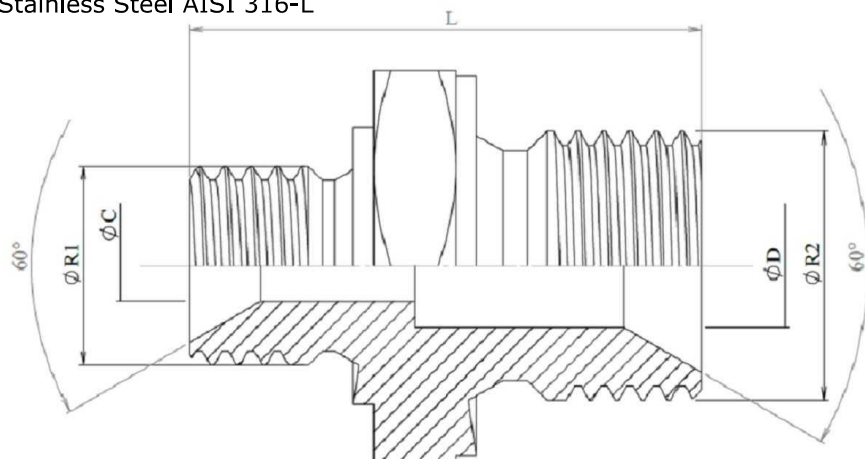


BSP Adaptors
Straight male adaptors

Reducer male adaptor BSP 60° - male BSP 60°

Stainless Steel AISI 316-L



Part n°	R1	R2	L	HEX 1	ØC	ØD
XR3010402	1/8" BSP	1/4" BSP	27	17	3,5	6
XR3010402H19	1/8" BSP	1/4" BSP	27	19	3,5	6
XR3010602	1/8" BSP	3/8" BSP	30	22	3,5	8
XR3010604	1/4" BSP	3/8" BSP	22	22	6	8
XR3010806	1/4" BSP	1/2" BSP	38	27	6	11
XR3011204	1/4" BSP	3/4" BSP	39,5	32	6	16
XR3010806	3/8" BSP	1/2" BSP	39	27	8	11
XR3011206	3/8" BSP	3/4" BSP	40,5	32	8	16
XR3011208	1/2" BSP	3/4" BSP	44	32	11	16
XR3011608	1/2" BSP	1" BSP	49	41	11	22
XR3011008	5/8" BSP	1/2" BSP	44	30	14	11
XR3011210	5/8" BSP	3/4" BSP	45	32	14	16
XR3011612	3/4" BSP	1" BSP	50	41	16	22
XR3012012	3/4" BSP	1"1/4" BSP	53,5	50	16	28,5
XR3012016	1" BSP	1"1/4" BSP	56,5	50	22	28,5
XR3012416	1" BSP	1"1/2" BSP	59,5	55	22	33
XR3012420	1"1/4" BSP	1"1/2" BSP	59	55	26	32
XR3013220	1"1/4" BSP	2" BSP	64	65	28	46
XR3013224	1"1/2" BSP	2" BSP	68	65	33	46
XR3013224H70	1"1/2" BSP	2" BSP	68	70	33	46