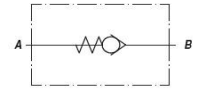
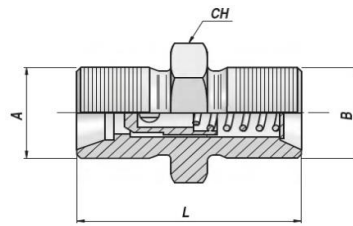


**VENTILER - MOTION CONTROL VALVES**

**VU MM**

**KONTRA VENTIL  
CHECK VALVE ( POPPET TYPE )**



Varenr. Code	A-B BSP	Q MAX l/min	P MAX bar	Type	L	CH	kg x 100
V1590.05941	1/4"	8	350	VU MM 1/4"-1	32	19	3.30
V1590.06041	3/8"	20	350	VU MM 3/8"-1	34	22	5.30
V1590.06141	1/2"	50	350	VU MM 1/2"-1	39	27	9.20
V1590.06241	3/4"	90	350	VU MM 3/4"-1	45	32	14.20
V1590.06341	1"	90	320	VU MM 1"-1	55	40	28.80
V1590.06371	1"1/4	250	320	VU MM 1"1/4-1	70	50	59.40
V1590.06381	1"1/2	300	320	VU MM 1"1/2"-1	86	55	91.00
V1590.06391	2"	650	320	VU MM 2"-1	102	70	180.00

Åbningstryk - Opening pressure : VU MM 1/4" > 1" = 1 bar(standard) - 3 - 6

Åbningstryk - Opening pressure : VU MM 1"1/4 > 2" = 1 bar(standard) - 6 - 9

RØRMONTERING

LINE MOUNTING

MATERIALE - MATERIAL : STÅL - STEEL