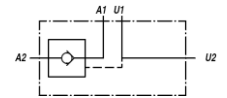
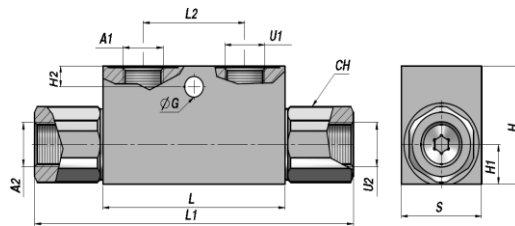
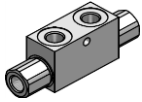


VENTILER - MOTION CONTROL VALVES

VRSE-F...FF

ENKELT VIRKENDE
SINGLE ACTING

PILOTSTYRET KONTRA VENTIL
PILOT OPERATED CHECK VALVE (POPPET TYPE)



Varenr. Code	A1-U1 BSP	A2-U2 BSP	Q MAX l/min	P MAX bar	PILOT RATIO	Type	L	L1 max	L2	ØG	H2	CH	H1	H	S	kg
VSG311.F00404	1/8"	1/8"	20	350	1:4	VRSE-F 005 FF	53	86	20	-	-	17	11	30	20	0,30
VSG311.F10454	1/4"	1/4"	30	350	1:4.5	VRSE-F 010 FF	68	118	38	7	7	24	13	40	30	0,68
VSG311.F15454	3/8"	3/8"	30	350	1:4.5	VRSE-F 015 FF	68	118	38	7	7	24	13	40	30	0,63
VSG311.F20404	3/8"	3/8"	50	300	1:4	VRSE-F 020 FF	80	144	40	8.5	15	27	16	50	30	0,97
VSG311.F25404	1/2"	1/2"	50	300	1:4	VRSE-F 025 FF	80	144	40	8.5	15	27	16	50	30	0,90
VSG311.F30404	1/2"	1/2"	80	300	1:4	VRSE-F 030 FF	90	171	40	8.5	15	30	20	60	40	1,69
VSG311.F40404	3/4"	3/4"	120	300	1:4	VRSE-F 040 FF	107	196	60	8.5	16	41	23	70	50	3,06

Åbningstryk - Opening pressure : bar 0.5 - 4(Standard) - 8

CYLINDER MONTERING

CYLINDER MOUNTING

MATERIALE - MATERIAL : STÅL - STEEL