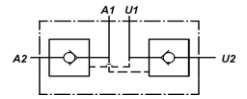
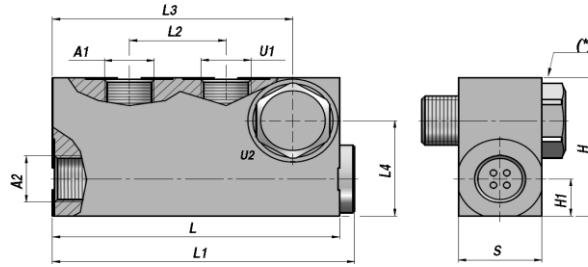
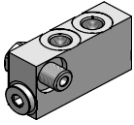


VRDE...CIL

**DOBBELT VIRKENDE
DOUBLE ACTING**

**PILOTSTYRET KONTRA VENTIL FOR CYLINDER MONTERING
PILOT OPERATED CHECK VALVE (POPPET TYPE)**



| Varenr. Code | A1-U1 BSP | A2-U2 BSP | Q MAX l/min | P MAX bar | PILOT RATIO | Type | L | L1 | L2 | L3 | L4 | H1 | H | S | kg |
|-----------------|--------------|--------------|-------------------|-----------------|----------------|--------------|----|------|----|------|----|----|----|----|------|
| VSG326.B10450 | 1/4" | 1/4" | 20 | 300 | 1:4.9 | VRDE 010 CIL | 84 | 88,5 | 24 | 68.5 | 27 | 10 | 40 | 20 | 0,45 |
| VSG326.B20490 | 3/8" | 3/8" | 20 | 300 | 1:4.9 | VRDE 020 CIL | 86 | 90,5 | 26 | 72 | 31 | 12 | 45 | 25 | 0,65 |

Åbningstryk - Opening pressure : 1 bar

(*) = Moment - Tightening torque

VRDE 010 CIL 1/4" = 40 Nm - VRDE 010 CIL 3/8" = 55 Nm

CYLINDER MONTERING

CYLINDER MOUNTING

MATERIALE - MATERIAL : STÅL - STEEL