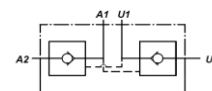
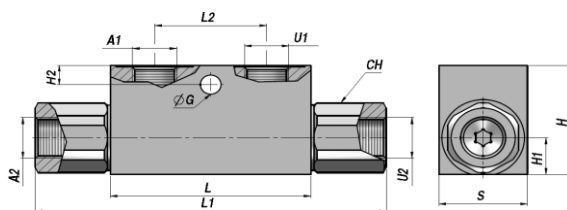
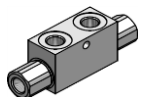


VENTILER - MOTION CONTROL VALVES

VRDE-F...FF

**DOBBELT VIRKENDE
DOUBLE ACTING**

**PILOT STYRET KONTRA VENTIL
PILOT OPERATED CHECK VALVE (POPPET TYPE)**



Varenr. Code	A1-U1 BSP	A2-U2 BSP	Q MAX l/min	P MAX bar	PILOT RATIO	Type	L max	L1	L2	ØG	H2	CH	H1	H	S	kg
VSG312.F00404	1/8"	1/8"	20	350	1:4	VRDE-F 005 FF	53	86	20	-	-	17	11	30	20	0,30
VSG312.F10454	1/4"	1/4"	30	350	1:4.5	VRDE-F 010 FF	68	118	38	7	7	24	13	40	30	0,69
VSG312.F15454	3/8"	3/8"	30	350	1:4.5	VRDE-F 015 FF	68	118	38	7	7	24	13	40	30	0,64
VSG312.F20404	3/8"	3/8"	50	300	1:4	VRDE-F 020 FF	80	144	40	8.5	15	27	16	50	30	0,98
VSG312.F25404	1/2"	1/2"	50	300	1:4	VRDE-F 025 FF	80	144	40	8.5	15	27	16	50	30	0,91
VSG312.F30404	1/2"	1/2"	80	300	1:4	VRDE-F 030 FF	90	171	40	8.5	15	30	20	60	40	1,72
VSG312.F40404	3/4"	3/4"	120	300	1:4	VRDE-F 040 FF	107	196	60	8.5	16	41	23	70	50	3,11

Åbningstryk - Opening pressure : bar 0,5 - 4(Standard) - 8

CYLINDER MONTERING
CYLINDER MOUNTING

MATERIALE - MATERIAL : STÅL - STEEL