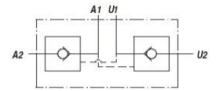
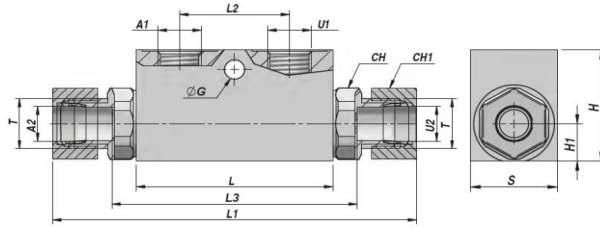
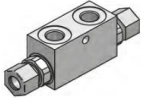


**VENTILER - MOTION CONTROL VALVES**
**VRDE-A...FF**
**DOBBELT VIRKENDE  
DOUBLE ACTING**
**PILOT STYRET KONTRA VENTIL DIN 2353  
PILOT OPERATED CHECK VALVE DIN 2353 ( POPPET TYPE )**


| Varenr.<br>Code | A1-U1<br>BSP | A2-U2 | T       | Q<br>MAX<br>l/min | P<br>MAX<br>bar | PILOT<br>RATIO | Type          | L<br>max | L1  | L2 | L3  | ØG  | H2 | CH | H1 | H  | S  | kg   |
|-----------------|--------------|-------|---------|-------------------|-----------------|----------------|---------------|----------|-----|----|-----|-----|----|----|----|----|----|------|
| VSG324.F05454   | 1/4"         | Ø10   | M16x1,5 | 20                | 350             | 1:4.5          | VRDE-A 005 FF | 68       | 138 | 38 | 86  | 7   | 7  | 24 | 13 | 40 | 30 | 0.64 |
| VSG324.F10454   | 1/4"         | Ø12   | M18x1,5 | 30                | 350             | 1:4.5          | VRDE-A 010 FF | 68       | 138 | 38 | 86  | 7   | 7  | 24 | 13 | 40 | 30 | 0.67 |
| VSG324.F14454   | 3/8"         | Ø10   | M16x1,5 | 20                | 350             | 1:4.5          | VRDE-A 014 FF | 68       | 138 | 38 | 86  | 7   | 7  | 24 | 13 | 40 | 30 | 0.63 |
| VSG324.F15454   | 3/8"         | Ø12   | M18x1,5 | 30                | 350             | 1:4.5          | VRDE-A 015 FF | 68       | 138 | 38 | 86  | 7   | 7  | 24 | 13 | 40 | 30 | 0.66 |
| VSG324.F20404   | 3/8"         | Ø15   | M22x1,5 | 50                | 300             | 1:4            | VRDE-A 020 FF | 80       | 166 | 40 | 108 | 8.5 | 15 | 27 | 16 | 50 | 30 | 0.97 |
| VSG324.F25404   | 1/2"         | Ø15   | M22x1,5 | 50                | 300             | 1:4            | VRDE-A 025 FF | 80       | 166 | 40 | 108 | 8.5 | 15 | 27 | 16 | 50 | 30 | 0.91 |
| VSG324.F30404   | 1/2"         | Ø18   | M26x1,5 | 80                | 300             | 1:4            | VRDE-A 030 FF | 90       | 180 | 40 | 133 | 8.5 | 15 | 30 | 20 | 60 | 40 | 1.67 |

Åbningstryk - Opening pressure : bar 0,5 - 4(Standard) - 8

MED OMLØBER OG SKÆRERING - WITH NUT AND CUTTING RING

CYLINDER MONTERING

CYLINDER MOUNTING

MATERIALE - MATERIAL : STÅL - STEEL