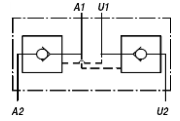
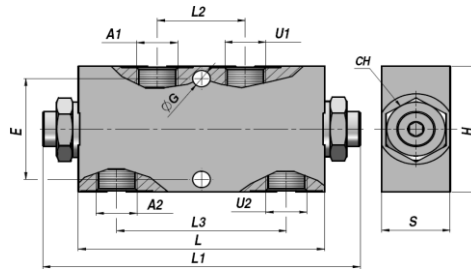
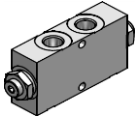


VENTILER - MOTION CONTROL VALVES

VPDE

**DOBBELT VIRKENDE
DOUBLE ACTING**

**PILOT STYRET KONTRA VENTIL
PILOT OPERATED CHECK VALVE (POPPET TYPE)**



Varenr. Code	A1-U1 BSP	A2-U2 BSP	Q MAX l/min	P MAX bar	PILOT RATIO	Type	L	L1	L2	L3	ØG	E	CH	H	S	kg
VSG352.104004	1/4"	1/4"	20	350	1:4	VPDE 010	90	113	32	62	6,5	40	22	50	25	0,79
VSG352.154004	3/8"	3/8"	20	350	1:4	VPDE 015	90	113	32	62	6,5	40	22	50	25	0,76
VAG352.207004 *	3/8"	3/8"	35	350	1:7	VPDE 020	96	113	32	62	6,5	40	27	60	35	0,62
VAG352.257004 *	1/2"	1/2"	35	350	1:7	VPDE 025	96	113	32	62	6,5	40	27	60	35	0,60
VAG352.305004 *	1/2"	1/2"	50	300	1:5.2	VPDE 030	117	139	43	84	10,1	40	32	70	40	1,00

Åbningstryk - Opening pressure : bar 0,5 - 4(Standard) - 8

RØRMONTERING
LINE MOUNTING

MATERIALE - MATERIAL : STÅL - STEEL
* MATERIALE - MATERIAL : ALUMINIUM