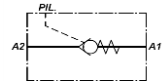
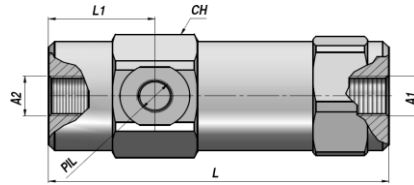


VENTILER - MOTION CONTROL VALVES

VBPS

**ENKELT VIRKENDE
SINGLE ACTING**

**PILOT STYRET KONTRA VENTIL
PILOT OPERATED CHECK VALVE (POPPET TYPE)**



Varenr. Code	A1-A2 BSP	PIL BSP	Q MAX l/min	P MAX bar	PILOT RATIO	Type	L	L1	CH	kg
VSG341.109500	1/4"	1/4"	25	350	1:9.5	VBPS 010	103	32.5	36	0,69
VSG341.206000	3/8"	1/4"	40	350	1:6	VBPS 020	111	35	40	0,93
VSG341.304300	1/2"	1/4"	60	350	1:4.3	VBPS 030	122	38	42	1,08
VSG341.404000	3/4"	1/4"	90	300	1:4.4	VBPS 040	145.5	44.5	55	2,32
VSG341.503500	1"	1/4"	130	260	1:3.5	VBPS 050	164	44.5	55	2,36

Åbningstryk - *Opening pressure* : bar **0,5(Standard)** - 4 - 8

RØRMONTERING
LINE MOUNTING

MATERIALE - MATERIAL : STÅL - STEEL