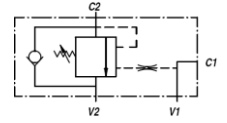
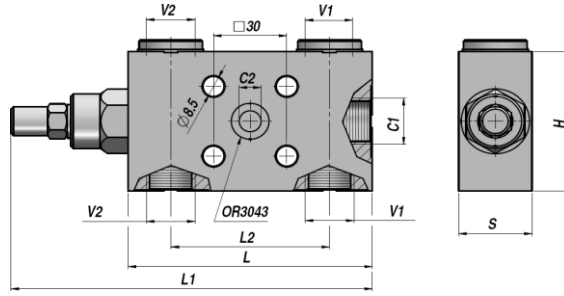
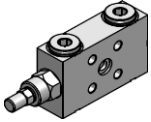


VENTILER - MOTION CONTROL VALVES

VBCD/FL SE

**ENKELT VIRKENDE
SINGLE ACTING**

**OVERCENTER VENTIL
OVERCENTER VALVE**



Varenr. Code	V1-V2 BSP	C1 BSP	C2	Q MAX l/min	P MAX bar	PILOT RATIO	Type	L	L1	L2	H	S	kg
V2190.B600	3/8"	3/8"	Ø9	40	350	1:4.5	VBCD/FL SE 3/8"	100	149	60	60	30	1,25
V2190.B800	1/2"	1/2"	Ø9	60	350	1:4.5	VBCD/FL SE 1/2"	100	149	65	60	30	1,21

Standard indstilling - *Standard setting* : 320 bar

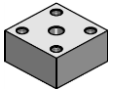
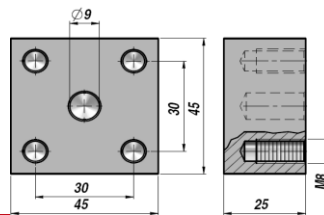
Minimum indstilling - *Minimum setting* : 200 bar

FLANGE MONTERING

FACE MOUNTING

MATERIALE - MATERIAL : STÅL - STEEL

Flange for VBCD...FL/SE - Sub-plate for VBCD...FL/SE



CODE	TYPE
V9990.8000	B8000 - 45x45x25

MATERIALE - MATERIAL: STÅL - STEEL