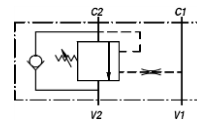
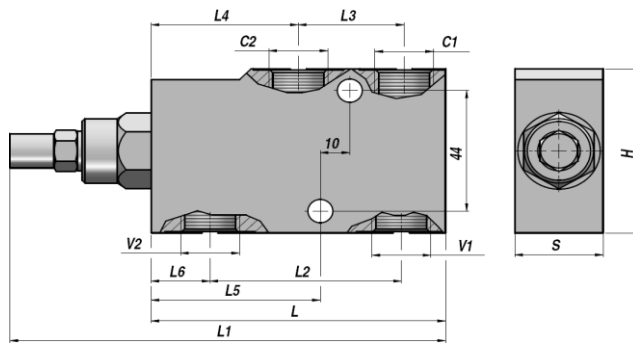
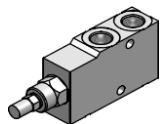


VBCD/A SE

ENKELT VIRKENDE
SINGLE ACTING

OVERCENTER VENTIL
OVERCENTER VALVE



Varenr. Code	V1-V2 BSP	C1-C2 BSP	Q MAX l/min	P MAX bar	PILOT RATIO	Type	L	L1	L2	L3	L4	L5	L6	H	S	kg
V2190.A400	1/4"	1/4"	20	350	1:4.5	VBCD/A SE 1/4"	100	149	60	30	50	55	20	60	30	1,31
V2190.A600	3/8"	3/8"	40	350	1:4.5	VBCD/A SE 3/8"	100	149	60	30	50	55	20	60	30	1,26
V2190.A800	1/2"	1/2"	60	350	1:4.5	VBCD/A SE 1/2"	100	149	65	36	50	57.5	20	60	30	1,20
V2190.A120	3/4"	3/4"	95	350	1:5.5	VBCD/A SE 3/4"	127	192	85	46	62.5	75	23.5	80	35	2,37

Standard indstilling - *Standard setting* : 320 bar

Minimum indstilling - *Minimum setting* : 200 bar

RØRMONTERING

LINE MOUNTING

MATERIALE - MATERIAL : STÅL - STEEL