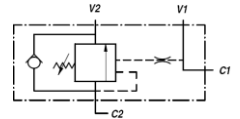
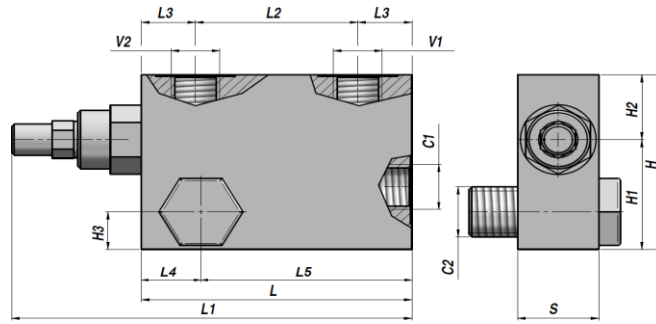
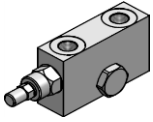


**VBCD/A SE-FLV**

ENKELT VIRKENDE  
SINGLE ACTING

OVERCENTER VENTIL  
OVERCENTER VALVE



Varenr. Code	V1-V2 BSP	C1-C2 BSP	Q MAX l/min	P MAX bar	PILOT RATIO	Type	L	L1	L2	L3	L4	L5	H1	H2	H3	H	S	kg
V2190.0392FLV	3/8"	3/8"	40	350	1:4.5	VBCD/A SE-FLV 3/8"	100	150	60	20	22	78	40	30	15	70	30	1,35
V2190.0412FLV	1/2"	1/2"	60	350	1:4.5	VBCD/A SE-FLV 1/2"	100	150	60	20	24	76	40	30	15	70	30	1,31

Standard indstilling - *Standard setting* : 320 bar  
 Minimum indstilling - *Minimum setting* : 200 bar

CYLINDER MONTERING  
CYLINDER MOUNTING

MATERIALE - MATERIAL : STÅL - STEEL