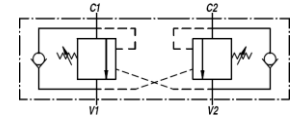
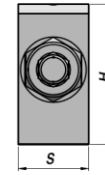
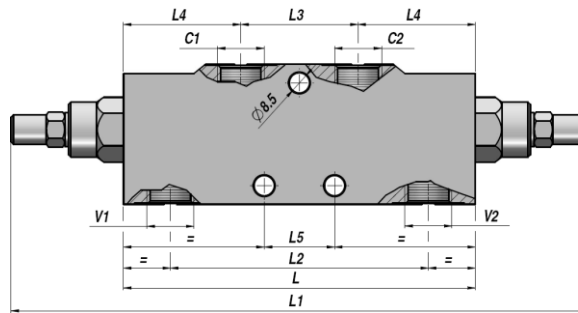
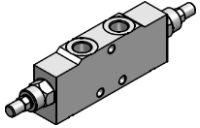


VBCD/A DE

**DOBBELT VIRKENDE
DOUBLE ACTING**

**OVERCENTER VENTIL
OVERCENTER VALVE**



Varenr. Code	V1-V2 BSP	C1-C2 BSP	Q MAX l/min	P MAX bar	PILOT RATIO	Type	L	L1	L2	L3	L4	L5	L6	H1	H2	H	S	kg
V2290.A400	1/4"	1/4"	20	350	1:4.5	VBCD/A DE 1/4"	150	248	110	50	50	30	44	32	28	60	30	1,97
V2290.A600	3/8"	3/8"	40	350	1:4.5	VBCD/A DE 3/8"	150	248	110	50	50	30	44	32	28	60	30	1,94
V2290.A800	1/2"	1/2"	60	350	1:4.5	VBCD/A DE 1/2"	150	248	110	50	50	30	44	32	28	60	30	1,89
V2290.A120	3/4"	3/4"	95	350	1:5.5	VBCD/A DE 3/4"	190	320	143	65	62.5	44	64	40	40	80	35	3,82

Standard indstilling - *Standard setting* : 320 bar

Minimum indstilling - *Minimum setting* : 200 bar

RØRMONTERING
LINE MOUNTING

MATERIALE - MATERIAL : STÅL - STEEL