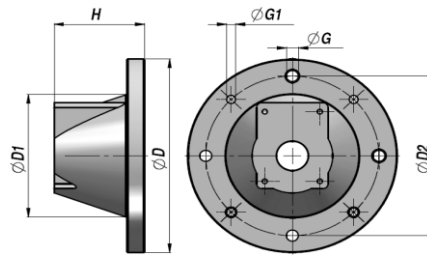
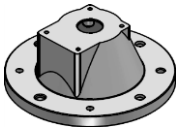


HL

FLANGE FOR EL-MOTOR
BELL-HOUSING TO CONNECT ELECTRIC MOTOR

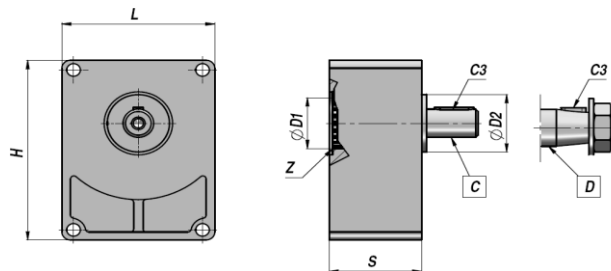
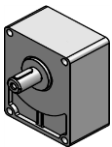


Varenr. Code	Type	ØD	Elektro motor Electric Motor kW	Pumpe Pump	ØD1	H	ØG	ØG1	ØD2	kg
AH30100200	HL2	"	"	GR.1	110	70	9	M8	130	0,44
AH30202800	HL5L	"	0.55 - 0.75 - 1.1 - 1.5	GR.1	130	86	11.5	M10	165	0,67
AH30203500	HL7SL	"	"	GR.2/2T	130	95	11.5	M10	165	0,65
AH30302500	HL8/1L	250	2.2 - 3 - 4	GR.1	176	115	13	M12	215	1,22
AH15050003	HL9L	"	"	GR.2/2T	176	115	13	M12	215	1,21
AH15050005	HL11	"	"	GR.3	176	130	13	M12	215	1.20
AH30400800	HL12	300	5.5 - 7.5	GR.2/2T	229	148	13	M12	265	1,99
AH30400900	HL13	"	"	GR.3	229	148	13	M12	265	1,99
AH15000001	HL15	350	11 - 15	GR.2/2T	210	187	18	ø18	300	3,38
AH30509200	HL16	"	11 - 15 - 18.5 - 22	GR.3	210	187	18	ø18	300	3,38

FÅS OGSÅ MED ADAPTER RING - ALSO AVAILABLE WITH ADAPTER RING

STSU

FORSATSLEJE
BELT PULLEY SUPPORT



Varenr. Code	Type	Pumpe Pump	ØD1	Z DIN 5482	ØD2	Aksel Shaft	C3	L	H	S	kg
BU12010002	STSU/1 - C	GR.1	25,4	Z14 - 25x22	50,8	C = ø18	6x6x25	75	93	40	0.80
BU12020001	STSU/2 - C	GR.2	36,5	Z14 - 25x22	36,5	C = ø18	6x6x30	89.4	114	54.5	1.40
BU12020007	STSUR/2 - C	GR.2	36,5	Z15 - 28x25	50,8	C = ø22	6x6x40	89.4	114	52	1,75
BU12030001	STSU/3 - C	GR.3	50,8	Z18 - 35x31	50,8	C = ø24	8x7x40	123.5	153.2	52	2.20
BU12010001	STSU/1 - D	GR.1	25,4	Z14 - 25x22	50,8	D = Konus Tapered 1:8	4 x 6,5	75	93	40	0.80
BU12020004	STSU/2 - D	GR.2	36,5	Z14 - 25x22	36,5		4 x 6,5	89,4	114	54.5	1.40
BU12020008	STSUR/2 - D	GR.2	36,5	Z15 - 28x25	50,8		4 x 6,5	89,4	114	52	1.75
BU12030002	STSU/3 - D	GR.3	50,8	Z18 - 35x31	50,8		4 x 7,5	123.5	153.2	52	2.20