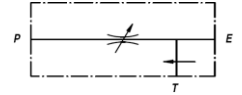
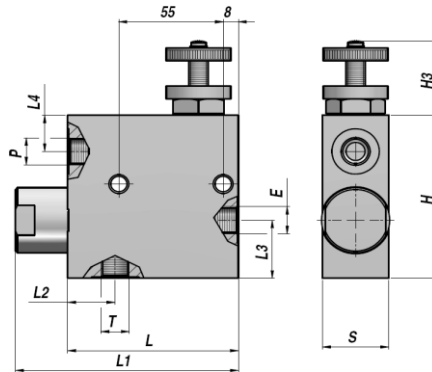
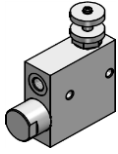


**RFP 3**

**TRYKKOMPENSERET PRIORITET DRØVLE VENTIL  
PRIORITY FLOW CONTROL (PRESSURE COMPENSATED)**

Bemærk venligst / please note :  
 E: Pumpetryk / pump pressure  
 P: Udgang til motor / output to motor  
 B: Retur til tank / return to tank



JUSTERBAR - ADJUSTABLE

REST OLIE TIL TANK - EXCEEDING FLOW TO TANK

Varenr. Code	E-P-T BSP	Q MAX l/min In (E) / Reg (P)	P MAX bar	Type	L	L1	L2	L3	L4	H1	H	S	kg
V3390.1110	3/8"	60 / 50	350	RFP 3 3/8"	90	118	25	32	20	40	90	35	2,17
V3390.1120	1/2"	80 / 60	350	RFP 3 1/2"	90	118	25	32	20	40	90	35	2,10
V3390.1130	3/4"	120/100	350	RFP 3 3/4"	90	122	27	36	19	40	102	50	3,35

RØRMONTERING  
LINE MOUNTING

MATERIALE - MATERIAL : STÅL - STEEL