

// 02

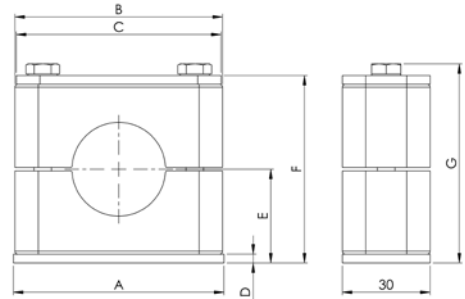
# ROHRSCHELLEN SERIE A

## TUBE CLAMPS SERIES A



### // ABMESSUNGEN UND GEWICHTE VON KOMPLETTSCHELLEN (MM)

### // DIMENSIONS AND WEIGHTS OF TUBE CLAMPS, COMPLETE (MM)



| GRÖSSE<br>SIZE | A   | B   | C   | D | E                 |                 | F                 |                 | G                 |                 | GEWICHT / 10 STK.<br>WEIGHT / 10 PCS.<br>RAPR3-xxx (kg) |
|----------------|-----|-----|-----|---|-------------------|-----------------|-------------------|-----------------|-------------------|-----------------|---|
|                |     |     |     |   | Rippen<br>Grooved | Glatt<br>Smooth | Rippen<br>Grooved | Glatt<br>Smooth | Rippen<br>Grooved | Glatt<br>Smooth |   |
| 0              | 30  | 28  | 28  | 3 | 16,5              | 16,2            | 33                | 32,4            | 37                | 36,4            | 0,66  |
| 1              | 36  | 34  | 34  | 3 | 16,5              | 16,2            | 33                | 32,4            | 37                | 36,4            | 0,82  |
| 2              | 42  | 42  | 40  | 3 | 19,5              | 19,1            | 39                | 38,2            | 43                | 42,2            | 0,98  |
| 3              | 50  | 49  | 48  | 3 | 20,5              | 20              | 41                | 40              | 45                | 44              | 1,14  |
| 4              | 59  | 59  | 57  | 3 | 24                | 23,4            | 48                | 46,8            | 52                | 50,8            | 1,36  |
| 5              | 72  | 71  | 70  | 3 | 32                | 31,4            | 64                | 62,8            | 68                | 66,8            | 1,83  |
| 6              | 88  | 86  | 86  | 3 | 36                | 35,4            | 72                | 70,8            | 76                | 74,8            | 2,22  |
| 7              | 122 | 121 | 120 | 5 | 51,8              | 51              | 103,6             | 102             | 107,6             | 106             | 4,55  |
| 8              | 148 | 147 | 146 | 5 | 63,8              | 63              | 127,6             | 126             | 131,6             | 130             | 6,18  |

Das Gewicht wurde mit dem kleinsten Durchmesser (siehe Katalog) und der Standard-Ausführung der Stahlteile der jeweiligen Größe in losem Zustand ermittelt.  
The weight was determined with the smallest diameter (see catalogue) and the standard model of the steel parts of the respective quantity in bulk.

**Bestellzeichen**

**für Schellenhälften:**

Polypropylen **RAPR**  
 innen glatt **RAPG<sup>2)</sup>**  
 Polyamid 6 **RANR**  
 innen glatt **RANG<sup>2)</sup>**  
 Vollgummi **RAVR<sup>3)</sup> 4)**  
**RAVG<sup>2)</sup> 3)**  
 Aluminium **RAAR<sup>1)</sup>**

Bei Bedarf Standardkurzzeichen RAPR in der Spalte „Schellenhälften“ austauschen.

**Order codes**

**for clamp-halves:**

Polypropylene **RAPR**  
 inside smooth **RAPG<sup>2)</sup>**  
 Polyamide 6 **RANR**  
 inside smooth **RANG<sup>2)</sup>**  
 Rubber **RAVR<sup>3)</sup> 4)**  
**RAVG<sup>2)</sup> 3)**  
 Aluminium **RAAR<sup>1)</sup>**

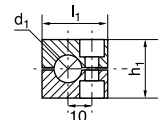
Replace standard abbreviation RAPR in column "clamp-halves" as required.



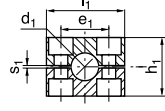
Größe 0  
Size 0



Größe 1-8  
Size 1-8



Größe 0  
Size 0



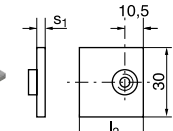
Größe 1-8  
Size 1-8



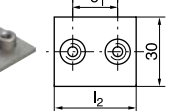
Größe 0  
Size 0



Größe 1-8  
Size 1-8



Größe 0  
Size 0



Größe 1-8  
Size 1-8

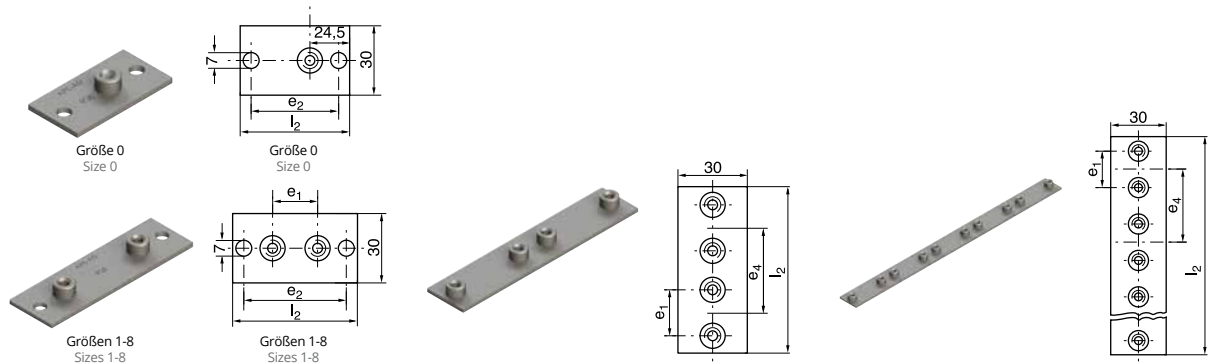
| GRÖSSE<br>SIZE | Rohr-AD mm<br>O.D. mm                                  | Rohr-NW<br>Tube NB | Rohr-AD Zoll<br>Inch O.D.    | RAPR<br>1 Stück / 2 Schellenhälften<br>1 part / 2 clamp-halves   | RAPR-...       |                |                |                | APK-A<br>Anschweißplatte<br>Weld plate |                |                |   |
|----------------|--|--------------------|------------------------------|--|----------------|----------------|----------------|----------------|--|----------------|----------------|---|
|                |  |                    |                              |  | l <sub>1</sub> | h <sub>1</sub> | e <sub>1</sub> | s <sub>1</sub> | e <sub>1</sub>                         | l <sub>2</sub> | s <sub>1</sub> |   |
| 0              | 4<br>6<br>6,4<br>8<br>9,5<br>10<br>12                  | G 1/8              | 1/4<br>5/16<br>3/8           | RAPR-004<br>RAPR-006<br>RAPR-006,4<br>RAPR-008<br>RAPR-009,5<br>RAPR-010<br>RAPR-012                         | 28             | 27             | -              | 0,6            | APK-A 0                                | -              | 30             | 3 |
| 1              | 4<br>6<br>6,4<br>8<br>9,5<br>10<br>12                  | G 1/8              | 1/4<br>5/16<br>3/8           | RAPR-104<br>RAPR-106<br>RAPR-106,4<br>RAPR-108<br>RAPR-109,5<br>RAPR-110<br>RAPR-112                         | 34             | 27             | 20             | 0,6            | APK-A 1                                | 20             | 36             | 3 |
| 2              | 12,7<br>13,5<br>14<br>15<br>16<br>17,2<br>18           | G 1/4<br>G 3/8     | 1/2<br>5/8                   | RAPR-212,7<br>RAPR-213,5<br>RAPR-214<br>RAPR-215<br>RAPR-216<br>RAPR-217,2<br>RAPR-218                       | 42             | 33             | 26             | 0,8            | APK-A 2                                | 26             | 42             | 3 |
| 3              | 19<br>20<br>21,3<br>22<br>23<br>25<br>25,4             | G 1/2              | 3/4<br>1                     | RAPR-319<br>RAPR-320<br>RAPR-321,3<br>RAPR-322<br>RAPR-323<br>RAPR-325<br>RAPR-325,4                         | 49             | 35             | 33             | 1              | APK-A 3                                | 33             | 50             | 3 |
| 4              | 26,9<br>28<br>30                                       | G 3/4              | 1                            | RAPR-426,9<br>RAPR-428<br>RAPR-430   | 59             | 42             | 40             | 1,2            | APK-A 4                                | 40             | 59             | 3 |
| 5              | 32<br>33,7<br>35<br>38<br>40<br>42                     | G 1<br>G 1 1/4     | 1 1/4<br>1 1/2               | RAPR-532<br>RAPR-533,7<br>RAPR-535<br>RAPR-538<br>RAPR-540<br>RAPR-542                                       | 71             | 58             | 52             | 1,2            | APK-A 5                                | 52             | 72             | 3 |
| 6              | 44,5<br>45<br>48<br>50<br>50,8<br>52<br>54<br>55<br>57 | G 1 1/2            | 1 3/4<br>2                   | RAPR-644,5<br>RAPR-645<br>RAPR-648<br>RAPR-650<br>RAPR-650,8<br>RAPR-652<br>RAPR-654<br>RAPR-655<br>RAPR-657 | 86             | 66             | 66             | 1,2            | APK-A 6                                | 66             | 88             | 3 |
| 7              | 57,2<br>60,3<br>63,5<br>70<br>73<br>76,1               | G 2<br>G 2 1/2     | 2 1/4<br>2 1/2<br>2 3/4<br>3 | RAPR-757,2<br>RAPR-760,3<br>RAPR-763,5<br>RAPR-770<br>RAPR-773<br>RAPR-776,1                                 | 121            | 93,6           | 94             | 1,6            | APK-A 7                                | 94             | 122            | 5 |
| 8              | 88,9<br>101,8  | G 3<br>G 3 1/2     | 3 1/2<br>4                   | RAPR 888,9<br>RAPR 8101,8  | 147            | 117,6          | 120            | 1,6            | APK-A 8                                | 120            | 148            | 5 |

Metallteile auch in Edelstahl lieferbar. <sup>1)</sup>Aluminium in Größen 0 bis 6 <sup>2)</sup>ohne Vorspannung <sup>3)</sup>Bei Montage von Vollgummi-Schellen sind Deckplatten, Sechskantschrauben und Sicherungsscheiben zu verwenden <sup>4)</sup>Vollgummi in Größen 1 bis 5

All metal parts available in stainless steel. <sup>1)</sup>Aluminium in sizes 0 to 6 <sup>2)</sup>without prestress <sup>3)</sup>When assembling solid rubber tube clamps, cover plates, hexagon screws and locking washers must be used <sup>4)</sup>Rubber in sizes 1 to 5



Komplett-Programm siehe Seiten 21 bis 25. Complete range please refer to pages 21 to 25.

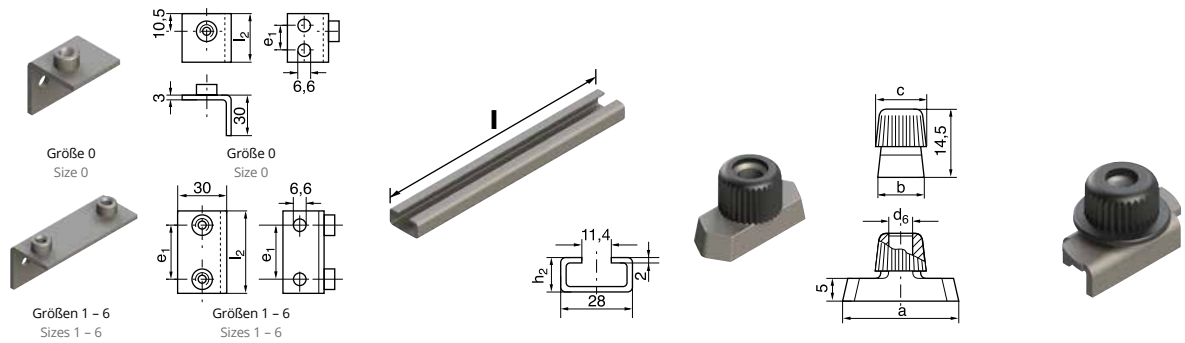


| GRÖSSE<br>SIZE | APL-A<br><i>Anschweiß- und Schraubplatte, lang</i><br><i>Weld- and screwplate, elongated</i> |       |       | APD-A<br><i>Anschweißplatte, doppelt</i><br><i>Weldplate, double</i> |                     |          | APR-A<br><i>Reihen-Anschweißplatte</i><br><i>Multiple weld plate</i> |            |  |          |          |            |
|----------------|--|-------|-------|--|---------------------|----------|--|------------|--|----------|----------|------------|
|                |  | $e_1$ | $l_2$ | $e_2$  |                     | $e_1$    | $e_4$  | $l_2$      |  | $e_1$    | $e_4$    | $l_2$      |
| 0              | APL-A 0  | -     | 58    | 44   | APD-A 0             | -        | 30   | 61         | APR-A 0<br>10 Schellen /<br>Clamps             | -        | 30       | 298        |
| 1              | APL-A 1  | 20    | 64    | 50   | APD-A 1<br>APDL-A 1 | 20<br>20 | 35<br>40   | 69<br>76   | APR-A 1<br>APRL-A 1<br>10 Schellen /<br>Clamps | 20<br>20 | 35<br>40 | 349<br>394 |
| 2              | APL-A 2  | 26    | 70    | 56   | APD-A 2<br>APDL-A 2 | 26<br>26 | 43<br>52   | 86<br>94   | APR-A 2<br>APRL-A 2<br>10 Schellen /<br>Clamps | 26<br>26 | 43<br>52 | 427<br>508 |
| 3              | APL-A 3  | 33    | 78    | 64   | APD-A 3<br>APDL-A 3 | 33<br>33 | 52<br>75   | 104<br>125 | APR-A 3<br>APRL-A 3<br>10 Schellen /<br>Clamps | 33<br>33 | 52<br>75 | 516<br>723 |
| 4              | APL-A 4  | 40    | 87    | 73   | APD-A 4             | 40       | 60   | 117        | APR-A 4<br>5 Schellen /<br>Clamps              | 40       | 60       | 297        |
| 5              | APL-A 5  | 52    | 100   | 86   | APD-A 5             | 52       | 75   | 145        | APR-A 5<br>5 Schellen /<br>Clamps              | 52       | 75       | 370        |
| 6              | APL-A 6  | 66    | 116   | 100  | APD-A 6             | 66       | 90   | 176        | APR-A 6<br>5 Schellen /<br>Clamps              | 66       | 2,22     | 446        |
| 7              | APL-A 7  | 94    | 150   | 136  |                     |          |  |            |  |          |          |            |
| 8              | APL-A 8  | 120   | 178   | 162  |                     |          |  |            |  |          |          |            |

Metallteile auch in Edelstahl lieferbar.  
 All metal parts available in stainless steel.



Komplett-Programm siehe Seiten 21 bis 25. Complete range please refer to pages 21 to 25.



| GRÖSSE<br>SIZE | APW-A<br>Winkel-Anschweißplatte<br>Weld plate, angled |                | TS-A/B<br>Tragschiene<br>Mounting rail |             |     | TM-A/B 1<br>Tragschienen-Mutter<br>Rail nut |                 |      |      | TM-A/B 1<br>Visitec<br>Visitec |     |      |      |                |    |
|----------------|---|----------------|--|-------------|-----|---|-----------------|------|------|--------------------------------|-----|------|------|----------------|----|
|                |   | e <sub>1</sub> | l <sub>2</sub>                         |             | l   | h <sub>2</sub>                              | a               | b    | c    | d <sub>6</sub>                 | a   | b    | c    | d <sub>6</sub> |    |
| 0              | APW-A 0   | 14             | 30                                     |             |     |   |                 |      |      |                                |     |      |      |                |    |
| 1              | APW-A 1   | 20             | 36                                     |             |     |   |                 |      |      |                                |     |      |      |                |    |
| 2              | APW-A 2   | 26             | 42                                     |             |     |   |                 |      |      |                                |     |      |      |                |    |
| 3              | APW-A 3   | 33             | 50                                     | TS 11-A/B 1 | 1 m | 11  |                 |      |      |                                |     |      |      |                |    |
|                |   |                |  | TS 11-A/B 2 | 2 m | 11  |                 |      |      |                                |     |      |      |                |    |
| 4              | APW-A 4   | 40             | 59                                     | TS 14-A/B 1 | 1 m | 14  | TM-A<br>(TM-B1) | 25,4 | 10,4 | 12                             | M 6 | 24,9 | 10,5 | 12             | M6 |
|                |   |                |  | TS 14-A/B 2 | 2 m | 14  |                 |      |      |                                |     |      |      |                |    |
| 5              | APW-A 5   | 52             | 72                                     | TS 30-A/B 1 | 1 m | 30  |                 |      |      |                                |     |      |      |                |    |
|                |   |                |  | TS 30-A/B 2 | 2 m | 30  |                 |      |      |                                |     |      |      |                |    |
| 6              | APW-A 6   | 66             | 88                                     |             |     |   |                 |      |      |                                |     |      |      |                |    |
| 7              |   |                |  |             |     |   |                 |      |      |                                |     |      |      |                |    |
| 8              |   |                |  |             |     |   |                 |      |      |                                |     |      |      |                |    |

Metallteile auch in Edelstahl lieferbar.  
 All metal parts available in stainless steel.



Komplett-Programm siehe Seiten 21 bis 25. Complete range please refer to pages 21 to 25.

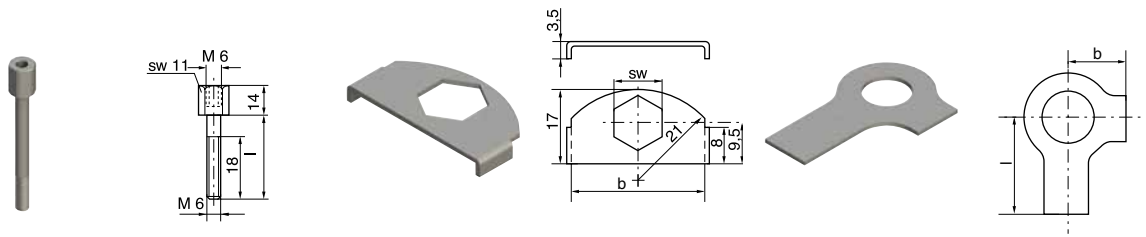


| GRÖSSE<br>SIZE | DP-A<br>Deckplatte<br>Cover plate |                | SL-A<br>Schlitzschraube<br>Slotted head screw |              | SSL-A<br>Sechskantschraube<br>Hexagon head screw |                     | IS-A<br>Innensechskantschraube<br>Hexagon socket head screw |                    |           |
|----------------|-----------------------------------|----------------|---|--------------|--|---------------------|---|--------------------|-----------|
|                |                                   | l <sub>3</sub> | e <sub>1</sub>                                |              | d x l  |                     | d x l   |                    | d x l     |
| 0              | DP-A 0                            | -              | -   | SL-A 0 / A 1 | M 6 x 20   | SSL-A 0 / A 1       | M 6 x 30  | IS-A 0 / A 1       | M 6 x 20  |
| 1              | DP-A 1                            | 34             | 20  | SL-A 0 / A 1 | M 6 x 20   | SSL-A 0 / A 1       | M 6 x 30  | IS-A 0 / A 1       | M 6 x 20  |
| 2              | DP-A 2                            | 40             | 26  | SL-A 2       | M 6 x 25   | SSL-A 2<br>(SS-B 1) | M 6 x 35  | IS-A 2             | M 6 x 25  |
| 3              | DP-A 3                            | 48             | 33  | SL-A 3       | M 6 x 30   | SSL-A 3             | M 6 x 40  | IS-A 3             | M 6 x 30  |
| 4              | DP-A 4                            | 57             | 40  | SL-A 4       | M 6 x 35   | SSL-A 4             | M 6 x 45  | IS-A 4<br>(IS-B 1) | M 6 x 35  |
| 5              | DP-A 5                            | 70             | 52  | SL-A 5       | M 6 x 50   | SSL-A 5             | M 6 x 60  | IS-A 5             | M 6 x 50  |
| 6              | DP-A 6                            | 86             | 66  | SL-A 6       | M 6 x 60   | SSL-A 6             | M 6 x 70  | IS-A 6             | M 6 x 60  |
| 7              | DP-A 7                            | 120            | 94  | SL-A 7       | M 6 x 90   | SSL-A 7             | M 6 x 100   | IS-A 7             | M 6 x 90  |
| 8              | DP-A 8                            | 146            | 120   | SL-A 8       | M 6 x 110  | SSL-A 8             | M 6 x 125   | IS-A 8             | M 6 x 110 |

Metallteile auch in Edelstahl lieferbar.  
 All metal parts available in stainless steel.



Komplett-Programm siehe Seiten 21 bis 25. Complete range please refer to pages 21 to 25.



| GRÖSSE<br>SIZE | AS-A<br>Aufbauschraube <sup>1)</sup><br>Stacking bolt <sup>1)</sup> |     | SBR-A<br>Sicherungsblech <sup>1)</sup><br>Locking plate <sup>1)</sup> |    |    | US-A<br>Sicherungsscheibe <sup>2)</sup><br>Locking washer <sup>2)</sup> |   |    |
|----------------|---|-----|---|----|----|---|---|----|
|                |   | l   |   | b  | SW |   | b | l  |
| 0              | AS-A 0 / A 1<br>(AS-B1)   | 20  |   |    |    |   |   |    |
| 1              | AS-A 0 / A 1<br>(AS-B1)   | 20  |   |    |    |   |   |    |
| 2              | AS-A 2  | 25  |   |    |    |   |   |    |
| 3              | AS-A 3  | 28  |   |    |    |   |   |    |
| 4              | AS-A 4  | 34  | SBR-A   | 30 | 11 | US-A  | 9 | 18 |
| 5              | AS-A 5  | 50  |   |    |    |   |   |    |
| 6              | AS-A 6  | 60  |   |    |    |   |   |    |
| 7              | AS-A 7  | 85  |   |    |    |   |   |    |
| 8              | AS-A 8  | 110 |   |    |    |   |   |    |

Metallteile auch in Edelstahl lieferbar.

<sup>1)</sup>Für Einsatz von Aufbauschrauben bei Aufbaumontage sind Sicherungsbleche notwendig

<sup>2)</sup>Bei Montage von Vollgummi-Schellen sind Deckplatten, Sechskantschrauben und Sicherungsscheiben zu verwenden

All metal parts available in stainless steel.

<sup>1)</sup>The usage of stacking bolts necessitates the use of locking plates during the construction assembly

<sup>2)</sup>When assembling solid rubber clamps, cover plates, hexagon screws and locking washers must be used

