

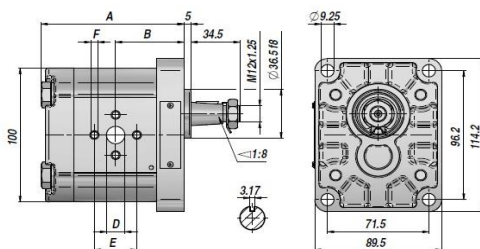
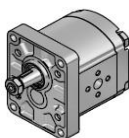
PS2-A

**TANDHJUL PUMPE
GEAR PUMP**

GR.2

**STANDARD EU \varnothing 36,5 FLANGE
STANDARD EUROPEAN \varnothing 36,5 FLANGE**

**KONISK AKSEL 1:8
1:8 TAPER SHAFT**



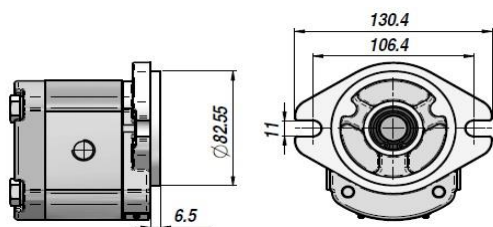
Varenr. Code	Type	cm ³ /omg. cm ³ /rev	P MAX bar		omdr./min rpm		A	B	IN D x E x F	OUT D x E x F	kg
			P1	P3	MAX	MIN					
PG29004*0011000	PS2-A 04 S/D 10N	4.00	250	290	4000	500	93.00	44.40	\varnothing 13x30xM6	\varnothing 13x30xM6	2.30
PG29006*0011000	PS2-A 06 S/D 10N	6.00	250	290	4000	500	96.30	46.00	\varnothing 13x30xM6	\varnothing 13x30xM6	2.45
PG29008*0011000	PS2-A 08 S/D 10N	8.50	250	290	3500	500	100.50	48.10	\varnothing 13x30xM6	\varnothing 13x30xM6	2.60
PG29011*0011000	PS2-A 11 S/D 10N	11.00	250	290	3500	500	104.60	50.20	\varnothing 19x40xM8	\varnothing 13x30xM6	2.70
PG29014*0011000	PS2-A 14 S/D 10N	14.00	250	290	3500	500	109.60	52.70	\varnothing 19x40xM8	\varnothing 13x30xM6	2.80
PG29016*0011000	PS2-A 16 S/D 10N	16.50	230	250	3500	500	113.80	54.80	\varnothing 19x40xM8	\varnothing 13x30xM6	2.95
PG29019*0011000	PS2-A 19 S/D 10N	19.50	210	230	3300	500	118.80	57.30	\varnothing 19x40xM8	\varnothing 13x30xM6	3.10
PG29022*0011000	PS2-A 22 S/D 10N	22.50	190	210	2800	500	123.80	59.80	\varnothing 19x40xM8	\varnothing 13x30xM6	3.25
PG29026*0011000	PS2-A 26 S/D 10N	26.00	170	190	2500	500	129.60	62.70	\varnothing 19x40xM8	\varnothing 13x30xM6	3.40

* 1= ANTICLOCKWISE
* 0= CLOCKWISE

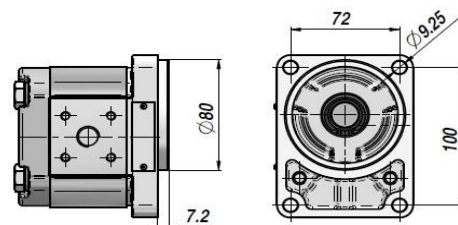
P1 = MAX. ARBEJDSTRYK - MAX. WORKING PRESSURE
P3 = MAX. BELASTNING - MAX. PEAK PRESSURE

FLANGER - AVAILABLE FLANGES

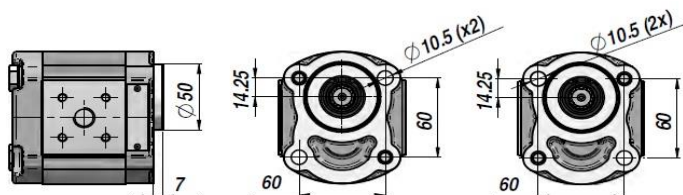
SAE-A



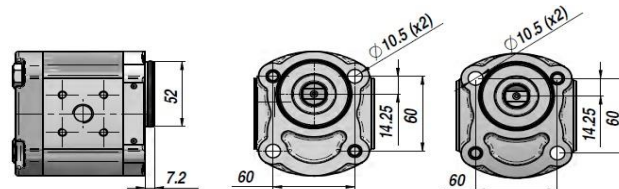
MC 32



E 32 BX



E 32 CX



AKSLER - AVAILABLE SHAFTS

EURO	SAE-A	B80C	B50 (CX-CY)	E52 (CX-CY)
10 	10 	10 	10 	17
11 	11 	11 	11 	
12 	12 	12 	12 	
13 	13 	13 	13 	
14 	14 	14 	14 	
15 	15 	15 	15 	
16 	16 	16 	16 	

TILSLUTNINGER - CONNECTIONS

N (EURO)	G (GAS)	T (BOSCH)	U (UNF)	F (SAE)
<p>Suction Delivery</p>	<p>Suction Delivery</p>	<p>Suction Delivery</p>	<p>Suction Delivery</p>	<p>Suction Delivery</p>
<p>Dimensions : see table on the left</p>	<p>C = 1/2" (cm³ 4 ÷ 8) C = 3/4" (cm³ 11 ÷ 26)</p>		<p>C = 7/8" - 14UNF (cm³ 4 ÷ 8) C = 1" 1/16 - 12UN (cm³ 11 ÷ 26)</p>	<p>C = 20 - D=38 - E=17.4 (cm³ 4 ÷ 11) C = 26 - D=22.4 - E=47.6 (cm³ 14 ÷ 26)</p>