

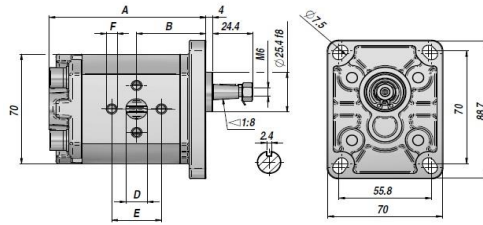
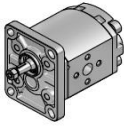
**PS1-A**

**TANDHJUL PUMPE  
GEAR PUMP**

**GR. 1**

**STANDARD EU ø25,4 FLANGE  
STANDARD EUROPEAN ø25,4 FLANGE**

**KONISK AKSEL 1:8  
1:8 TAPER SHAFT**



Varenr. Code	Type	cm <sup>3</sup> /omg. cm <sup>3</sup> /rev	P MAX bar		omdr./min rpm		A	B	IN D x E x F	OUT D x E x F	kg
			P1	P3	MAX	MIN					
PG009*001110000	PS1-A 0.9 S/D 10NNO	0.89	240	290	6000	600	73.60	34.80	ø10x26xM5	ø10x26xM5	0.91
PG012*001110000	PS1-A 1.2 S/D 10NNO	1.18	240	290	6000	600	74.70	35.35	ø10x26xM5	ø10x26xM5	0.93
PG016*001110000	PS1-A 1.6 S/D 10NNO	1.60	240	290	6000	400	76.40	36.20	ø10x26xM5	ø10x26xM5	0.95
PG020*001110000	PS1-A 2.0 S/D 10NNO	2.00	220	270	5500	400	77.90	36.95	ø10x26xM5	ø10x26xM5	0.97
PG025*001110000	PS1-A 2.5 S/D 10NNO	2.50	220	270	5000	400	79.90	37.95	ø13x30xM6	ø13x30xM6	1.00
PG032*001110000	PS1-A 3.2 S/D 10NNO	3.20	210	260	4500	400	82.60	39.30	ø13x30xM6	ø13x30xM6	1.04
PG037*001110000	PS1-A 3.7 S/D 10NNO	3.70	210	260	4000	400	84.60	40.30	ø13x30xM6	ø13x30xM6	1.07
PG042*001110000	PS1-A 4.2 S/D 10NNO	4.20	190	230	3500	400	86.50	41.25	ø13x30xM6	ø13x30xM6	1.10
PG050*001110000	PS1-A 5.0 S/D 10NNO	5.00	180	230	3000	400	89.60	42.80	ø13x30xM6	ø13x30xM6	1.14
PG063*001110000	PS1-A 6.3 S/D 10NNO	6.30	170	210	2700	400	94.70	45.35	ø13x30xM6	ø13x30xM6	1.22
PG078*001110000	PS1-A 7.8 S/D 10NNO	7.76	170	210	2500	400	100.40	48.20	ø13x30xM6	ø13x30xM6	1.30
PG098*001110000	PS1-A 9.8 S/D 10NNO	9.78	150	190	2000	400	108.30	52.15	ø13x30xM6	ø13x30xM6	1.41

\* 1= ANTICLOCKWISE

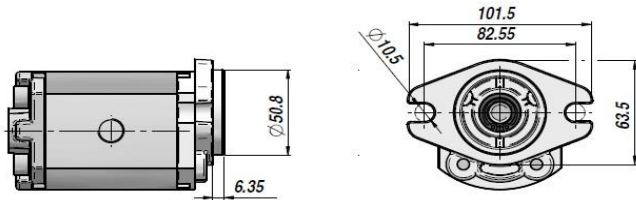
\* 0= CLOCKWISE

P1 = MAX. ARBEJDSTRYK - MAX. WORKING PRESSURE

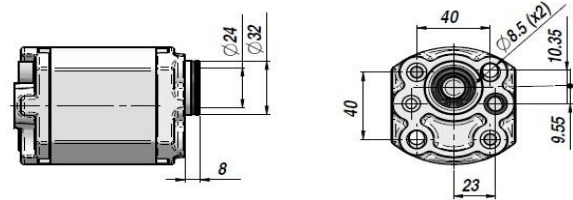
P3 = MAX. BELASTNING - MAX. PEAK PRESSURE

**FLANGER - AVAILABLE FLANGES**

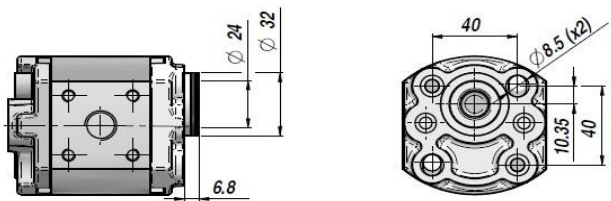
SAE-AA



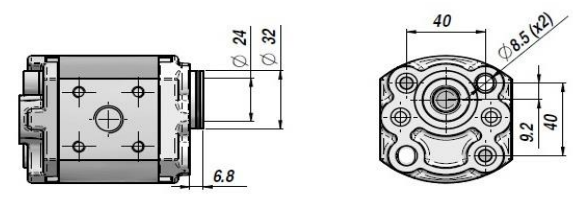
MC 32



E 32 BX



E 32 CX



AKSLER - AVAILABLE SHAFTS

EURO	SAE-AA	MC32	E32BX	E32CX
10  28.4 2.4 M6 $\Delta 1:8$	10  24.9 2.4 M6 $\Delta 1:8$	10  28.4 2.4 M6 $\Delta 1:8$	17  5.5 5 $\Delta 1:8$ $\varnothing 12$ $\varnothing 24$	17  5.5 5 $\Delta 1:8$ $\varnothing 12$ $\varnothing 24$
11  26 2 M6 $\Delta 1:5$	11  22.5 2 M6 $\Delta 1:5$	11  26 2 M6 $\Delta 1:5$	E32BC  5.5 5 $\Delta 1:8$ $\varnothing 12$ $\varnothing 24$	E32CC  5.5 5 $\Delta 1:8$ $\varnothing 12$ $\varnothing 24$
13  30.5 19 $\varnothing 12.68$ 3.17	13  27 19 $\varnothing 12.68$ 3.17	15  22 17.5 Splined profile DIN 5480 12x9 z=6		
14  30.5 19 Splined profile SAE 9T - 20/40 DP	14  27 19 Splined profile SAE 9T - 20/40 DP	27  6.5 5 $\Delta 1:8$ $\varnothing 12$ $\varnothing 24$		
15  22 17.5 Splined profile DIN 5480 12x9 z=6				
27  6.5 5 $\Delta 1:8$ $\varnothing 12$ $\varnothing 24$				

TILSLUTNINGER - CONNECTIONS

NN (EURO)	GG (GAS)	TT (BOSCH)	UU (UNF)	GG4 (GAS)
Suction Delivery  E D F	Suction Delivery  3/8" BSP	Suction Delivery  90° M6 $\varnothing 12$ $\varnothing 30$	Suction Delivery  D	S= Suction D= Delivery  3/8" BSP 29 20
Dimensions : see table on the left			D = 9/16" - 18UNF (cm <sup>3</sup> 0.9 ÷ 2.0) D = 3/4" - 16UNF (cm <sup>3</sup> 2.5 ÷ 9.8)	