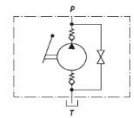
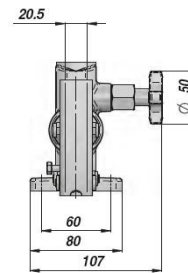
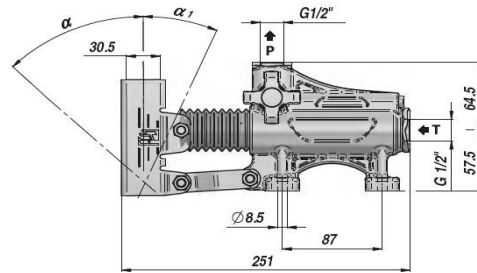
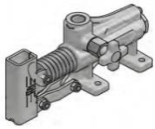


PAM-S 40

**HÅND PUMPE MED SÆNKEVENTIL
HAND PUMP WITH LOWERING VALVE**

IKKE FOR TANKMONTERING
NOT SUITABLE FOR OIL TANK



Varenr. Code	Type	cm ³ /cycle	P MAX bar	α	α1	kg
PAM0144001	PAM-S 40	42	280	50°	20°	3.33

HÅNDTAG BESTILLES SEPERAT - LEVER SUPPLIED SEPARATELY

Pumper begge vej for enk.virkende cylinder - Double-stroke for a S.A. cylinder

Arbejdstemperatur - Working temperature : -20°C +80°C

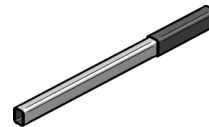
KAN OGSÅ LEVERES MED - ON REQUEST :

FPM = O-RING: VITON

VMQ = O-RING: FLUORINE-SILICONE

HÅNDTAG - LEVERS

Varenr. Code	Størrelse Sizes	kg
* PAM0290000	20 x 30 x 600	0.71
PAM0290900	20 x 30 x 900	1.41
PAM0291000	20 x 30 x 1000	1.55



* Standard håndtag - Standard hand lever

RESERVEDELE - SPARE PARTS

Varenr. Code	Betegnelse Description	N°
PAMJVS1245	Sænkeventil kit Lowering valve kit	1
PAMJV02000	Suge ventil kit Suction valve kit	2
PAMJB02040	Plejlstang kit Conrod kit	3
PAMJ010001	Holder f/håndtag Hand lever holder	4
PAMJPS4045	Stempelstang kit Rod Piston assembled kit	5
PAMJ020015	Bælg Bellow	6
PAMGT00040	Standard pakn. sæt Standard seal kits	7

