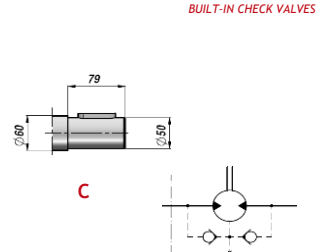
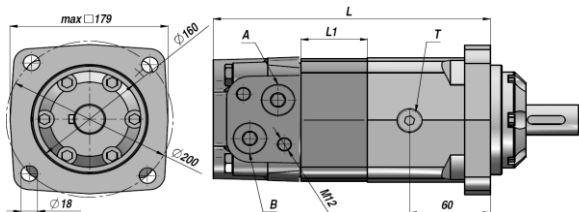
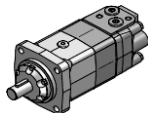


HYDRAULIKMOTORER - HYDRAULIC MOTORS

MPV (MV) MOTOR "M+S HYDRAULIC" LIGE AKSEL Ø50 PARALLEL SHAFT Ø50 FIRKANTET FLANGE - 4 HULLER SQUARE FLANGE - 4 HOLES

Standard: SIDE PORTE - SIDE PORTS



KLARGJORT FOR DRÆN
MACHINED FOR DRAIN CONNECTION

Varenr. Code	Type	cm3/omg cm3/rev	n. Max omdr./min rpm	M Max daNm	Q Max l/min	P MAX bar			A - B	T	L	L1	kg	
						Fald-Drop Dp	Indgang Inlet	Retur Return						
UAFBRUDT DRIFT - CONTINUOUS WORK														
MPV315C000	MPV 315 C	314,5	510	92	160	200	210	140 *			214.5	22.0	31.80	
MPV400C000	MPV 400 C	400,9	500	118	200	200	210	140 *			221.5	29.0	32.60	
MPV500C000	MPV 500 C	499,6	400	146	200	200	210	140 *	1"	1/4"	229.5	37.0	33.50	
MPV630C000	MPV 630 C	629,1	320	166	200	180	210	140 *			240	47,5	34.90	
MPV800C000	MPV 800 C	801,8	250	188	200	160	210	140 *			254	61,5	36.50	

* = MED DRÆN - WITH DRAIN

<p>OPTION</p> <p>OPTION</p> <p>W: (Wheel Mount)</p>	<p>MAX. RETURTRYK UDEN DRÆN MAX. RETURN PRESSURE WITHOUT DRAIN</p>
<p>OPTION</p> <p>OPTION</p> <p>C: SAE C Mount</p>	<p>MAX. TILLADT AKSEL BELASTNING SHAFT LOADS</p> <p>PERMISSIBLE</p> <p>Albero - Shaft - Welle : "C-CO-K-SH"</p> <p>Prad = Carico radiale-Radial load-Radiale Belastung Pa = Carico assiale-Axial load-Axiale Belastung</p> <p>Prad max = 1500 daN</p>
<p>VERSIONI SPECIALI - SPECIAL VERSIONS</p> <p>W: hjul monteret - wheel mount S / V: korte versioner - short versions</p>	