

HYDRAULIKMOTORER - HYDRAULIC MOTORS

MPP (MP)

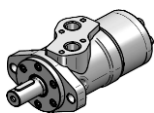


MOTOR "M+S HYDRAULIC"
"M+S HYDRAULIC" MOTOR

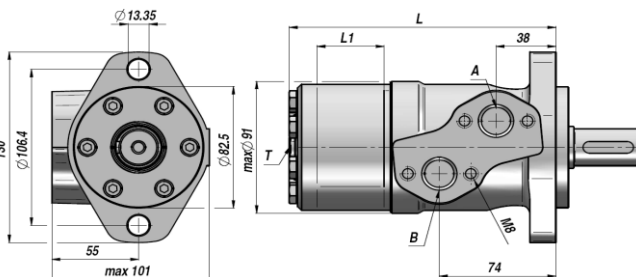
LIGE AKSEL Ø25
PARALLEL SHAFT Ø25

FLANGE "SAE A" - 2 HULLER
"SAE A" FLANGE - 2 HOLES

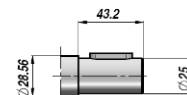
Standard: SIDE PORTE - SIDE PORTS



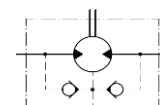
KLARGJORT FOR DRÆN
MACHINED FOR DRAIN CONNECTION



BUILT-IN CHECK VALVES



C



Varenr. Code	Type	cm ³ /omg cm ³ /rev	n. Max omdr./min rpm	M Max daNm	Q Max l/min	P MAX bar			A - B	T	L	L1	kg
						Fald-Drop Dp	Indgang Inlet	Retur Return					
KONTINUERLIG DRIFT - CONTINUOUS WORK													
MSP025NC25 **	MPP 25 CD	25.0	1600	3.3	40	100	175	175 *	1/2" 1/4"		134	5.20	5,60
MSP032NC25 **	MPP 32 CD	32.0	1560	4.3	50	100	175	175 *		135	6.30	5,60	
MSP040NC25 **	MPP 40 CD	40.0	1500	6.2	60	120	175	175 *		136.5	7.40	5,70	
MSP050NC25	MPP 50 C	49.5	1210	9.4	60	140	175	175 *		135.5	6.67	5,80	
MSP080NC25	MPP 80 C	79.2	755	15,1	60	140	175	175 *		139.5	10,67	5,90	
MSP100NC25	MPP 100 C	99.0	605	19,3	60	140	175	175 *		142	13,33	6,10	
MSP125NC25	MPP 125 C	123,8	486	23,7	60	140	175	175 *		145.5	16,67	6,20	
MSP160NC25	MPP 160 C	158,4	378	31,3	60	140	175	175 *		150	21,33	6,40	
MSP200NC25	MPP 200 C	198,0	303	36,6	60	140	175	175 *		155.5	26,67	6,60	
MSP250NC25	MPP 250 C	247,5	242	38,0	60	110	175	175 *		162	33,33	6,80	
MSP315NC25	MPP 315 C	316,8	190	38,0	60	90	175	175 *		171.5	42,67	7,10	
MSP400NC25	MPP 400 C	396,0	150	36,0	60	70	175	175 *		182	53,33	7,60	
MSP500NC25	MPP 500 C	495,0	120	39,0	60	60	140	140 *		195.5	66,63	8,90	
MSP630NC25	MPP 630 C	623,6	95	44,0	60	55	140	140 *		213	84,00	9,50	

* = MED DRÆN - WITH DRAIN

** Kun version "D" - "D" Version only (se diagram - see diagram)

OPTION

CO

SH

K

CB

KB

OPTION

Q: (Square Mount)

F: SAE A/4 (Oval Mount)

OPTION

E: BAGPORTE REAR PORTS

MAX. RETURTRYK UDEN DRÆN
MAX. RETURN PRESSURE WITHOUT DRAIN

MAX. TILLADT AKSEL BELASTNING
PERMISSIBLE SHAFT LOADS

Con cuscinetti a rulli - With Needle bearings - Mit Rollenlagern : "N"

SPECIAL VERSIONER - SPECIAL VERSIONS

D: Akseltætning - shaft seal : max 150 bar

N/D: med nålelejer - with needle bearings

W: hjul monteret - wheel mount