

HYDRAULIKMOTORER - HYDRAULIC MOTORS

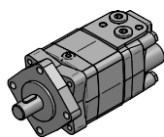
MCSY

MOTOR "Z-J HYDRAULIC"
"Z-J HYDRAULIC" MOTOR

LIGE AKSEL Ø32
PARALLEL SHAFT Ø32

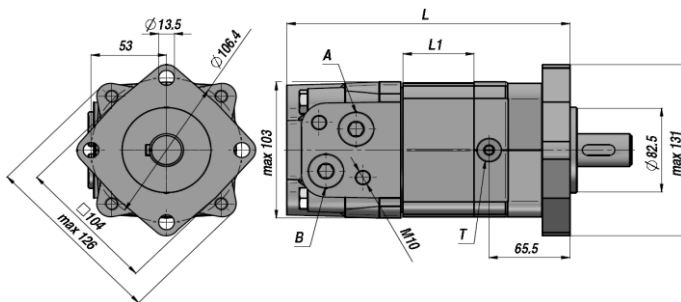
FLANGE "SAE A" - 4 HULLER
"SAE A" FLANGE - 4 HOLES

Standard: MED NÅLELEJER FOR RADIAL BELASTNING - WITH NEEDLE BEARINGS FOR RADIAL LOADS

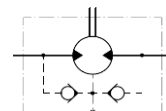
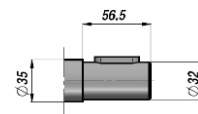


SORT MALET
BLACK PAINTED

KLARGJORT FOR DRÆN
MACHINED FOR DRAIN CONNECTION



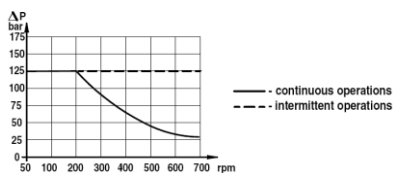
BUILT-IN CHECK VALVES



Varenr. Code	Type	cm3/omg cm3/rev	n. Max omdr./min rpm	M Max daNm	Q Max l/min	P MAX bar			A - B	T	L	L1	kg	
						Fald-Drop Dp	Indgang Inlet	Retur Return						
KONTINUERLIG DRIFT - CONTINUOUS WORK														
MCSY080C00	MC-SY 80 C	80.6	800	22,5	65	205	225	125 *			170	16,0	9,80	
MCSY100C00	MC-SY 100 C	100,8	748	29,0	75	205	225	125 *			174	20,0	10,00	
MCSY125C00	MC-SY 125 C	125,0	600	36,5	75	205	225	125 *			179	25,0	10,30	
MCSY160C00	MC-SY 160 C	154,0	470	48,5	75	210	225	125 *			181	27,0	10,70	
MCSY200C00	MC-SY 200 C	194,0	375	58,6	75	210	225	125 *	1/2"	1/4"	188	34,0	11,10	
MCSY250C00	MC-SY 250 C	243,0	300	70,8	75	200	225	125 *			196	42,0	11,60	
MCSY315C00	MC-SY 315 C	311,0	240	88,0	75	200	225	125 *			208	54,0	12,30	
MCSY400C00	MC-SY 400 C	394,0	185	88,0	75	160	225	125 *			223	69,0	13,20	
MCSY475C00	MC-SY 475 C	475,0	155	91,0	75	140	225	125 *			237	83,0	14,30	

* = MED DRÆN - WITH DRAIN

MAX. RETURTRYK UDEN DRÆN MAX. RETURN PRESSURE WITHOUT DRAIN



MAX. TILLADT AKSEL BELASTNING PERMISSIBLE SHAFT LOADS

