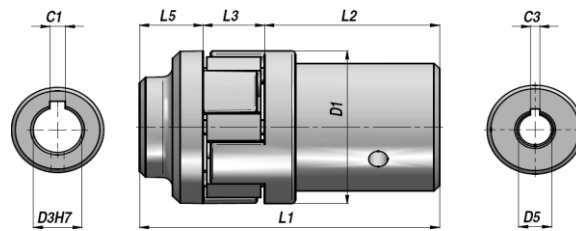


HE

FLEKSIBEL KOBLING  
FLEXIBLE COUPLING



Varenr. Code	Type	D1	L1	Elektrisk motor - Electric Motor				L3	Pumpe - Pump				kg
				kW	ØD3	C1	L2		GR.	D5	C3	L5	
BH10200002	HE2	43	62	"	"	5	29.5	16	GR.1	1:8	2,4	16.5	0,12
BH10200020	HE22	43	81	0.55 - 0.75	19	6	45.5	16	GR.T05	ø7	2.0	19.5	0,16
BH10200006	HE6	43	78	"	"	6	45.5	16	GR.1	1:8	2,4	16.5	0,16
BH10200042	HE46	63	85.5	"	"	6	44.5	19	GR.2	1:8	3,2	22	0,32
BH10200043	HE47	63	85.5	"	"	6	44.5	19	GR.2T	1:8	4.0	22	0,32
BH10200037	HE41	63	78	1.10 - 1.50	24	8	36	19	GR.1	1:8	2,4	23	0,30
BH10200012	HE14	63	85.5	"	"	8	44.5	19	GR.2	1:8	3,2	22	0,34
BH10200013	HE15	63	85.5	"	"	8	44.5	19	GR.2T	1:8	4.0	22	0,34
BH10200014	HE16	63	106.5	2.20 - 3 - 4	28	8	64.5	19	GR.1	1:8	2,4	23	0,43
BH10200017	HE19	63	105.5	"	"	8	64.5	19	GR.2	1:8	3,2	22	0,44
BH10200018	HE20	63	105.5	"	"	8	64.5	19	GR.2T	1:8	4.0	22	0,44
BH10200084	HE48	63	119.5	"	"	8	64.5	19	GR.3	1:8	4.0	36	0,48
BH10200024	HE28	86	134	5.50 - 7.50	38	10	79	23	GR.2	1:8	3,2	32	0,86
BH10200025	HE29	86	134	"	"	10	79	23	GR.2T	1:8	4.0	32	0,86
BH10200026	HE30	86	134	"	"	10	79	23	GR.3	1:8	4.0	32	0,93
BH10200027	HE31	86	133.5	"	"	10	79	23	GR.3.5	1:8	4,8	31.5	0,91
BH10200028	HE32	110	174	11 - 15	42	12	105	27	GR.2	1:8	3,2	42	1,54
BH10200029	HE33	110	174	"	"	12	105	27	GR.2T	1:8	4.0	42	1,54
BH10200030	HE34	110	174	"	"	12	105	27	GR.3	1:8	4.0	42	1,57
BH10200031	HE35	110	174	"	"	12	105	27	GR.3.5	1:8	4,8	42	1,56
BH10200032	HE36	110	174	"	"	12	105	27	GR.4	1:8	6,4	42	1,60
BH10200033	HE37	110	174	18.50 - 22	48	14	105	27	GR.3	1:8	4.0	42	1,61
BH10200034	HE38	110	174	"	"	14	105	27	GR.3.5	1:8	4,8	42	1,60
BH10200035	HE39	110	174	"	"	14	105	27	GR.4	1:8	6,4	42	1,73