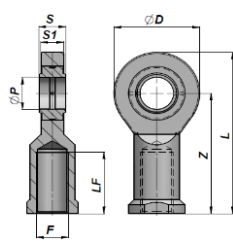


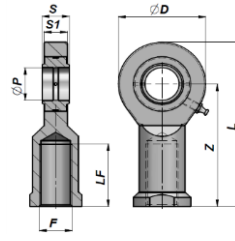
LEDLEJE MED INDV. GEVIND

BALL-JOINT END WITH GREASE NIPPLE

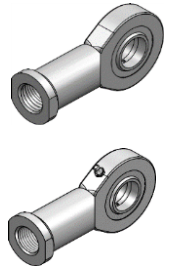
GIR..DO



GIR 6-20 DO/DO2RS



GIR 25-80 DO/DO2RS



Varenr. Code Type DO	Varenr. Code Type DO...2RS	ØP	Z	S	ØD	S1	L	F	LF	FC (kN)	kg
*GIR06DO		6	30	6	21	4,3	40,5	M6x1	11	3,4	0,02
*GIR08DO		8	36	8	24	6	48	M8x1.25	15	5,5	0,04
*GIR10DO		10	43	9	29	7	57,5	M10x1.5	20	8,1	0,06
*GIR12DO		12	50	10	34	8	67	M12x1.75	24	10,8	0,09
**GIR15DO		15	61	12	40	10	81	M14x2	30	17	0,18
**GIR17DO	**GIR17D2	17	67	14	46	11	90	M16x2	34	21,2	0,22
**GIR20DO	**GIR20D2	20	77	16	53	13	103,5	M20x1.5	40	30	0,35
GIR25DO	GIR25D2	25	94	20	64	17	126	M24x2	48	48	0,64
GIR30DO	GIR30D2	30	110	22	73	19	146,5	M30x2	56	62	0,93
GIR35DO	GIR35D2	35	125	25	82	21	166	M36x3	60	80	1,30
GIR40DO	GIR40D2	40	142	28	92	23	188	M39x3	67	100	2,01
GIR45DO	GIR45D2	45	145	32	102	27	196	M42x3	65	127	2,50
GIR50DO	GIR50D2	50	160	35	112	30	216	M45x3	69	156	3,50
GIR60DO	GIR60D2	60	175	44	135	38	242	M52x3	73	245	5,50
GIR70DO	GIR70D2	70	200	49	160	42	280	M56x4	80	315	8,60
GIR80DO	GIR80D2	80	230	55	180	47	320	M64x4	85	400	12,00

FC = MAX DYNAMIC LOAD (kN)

* = UDEN SMØRENIPPEL - WITHOUT GREASE NIPPLE

** = SMØREHUL I HOVEDET - LUBRICATING HOLE IN THE HEAD

MATERIALE : STÅL ISO 12240-4 SERIE F

MATERIAL : STEEL ISO 12240-4 SERIES F