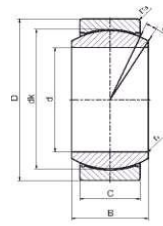


LED-LEJE RUSTFRI, VEDLIGEHOLDELSSEFRI
 MAINTENANCE FREE RADIAL BALL-JOINT, STAINLESS STEEL

GE..ET/X



Varenr. Code Type GE..ET/X	Varenr. Code Type GE..ET-2RS/X	d	D	B	C	α	FC (kN)	kg
GE15ET/X	GE15ET-2RS/X	15	26	12	9	8	25	0,03
GE17ET/X	GE17ET-2RS/X	17	30	14	10	10	32	0,04
GE20ET/X	GE20ET-2RS/X	20	35	16	12	9	45	0,07
GE25ET/X	GE25ET-2RS/X	25	42	20	16	7	85	0,12
GE30ET/X	GE30ET-2RS/X	30	47	22	18	6	110	0,15
GE35ET/X	GE35ET-2RS/X	35	55	25	20	6	140	0,23
GE40ET/X	GE40ET-2RS/X	40	62	28	22	7	175	0,31
GE45ET/X	GE45ET-2RS/X	45	68	32	25	7	225	0,43
GE50ET/X	GE50ET-2RS/X	50	75	35	28	6	275	0,55
GE55ET/X	GE55ET-2RS/X	55	85	40	32	7	355	0,94
GE60ET/X	GE60ET-2RS/X	60	90	44	36	6	430	1,04

FC = MAX DYNAMIC LOAD (Kn)

KUGLE - COUPLING : RUSTFRIT STÅL/PTFE - STAINLESS STEEL / PTFE

MATERIALE : W 1.4031 ISO 12240-1 SERIE E

MATERIAL : W 1.4031 ISO 12240-1 SERIES E