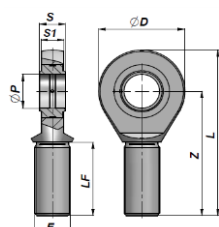
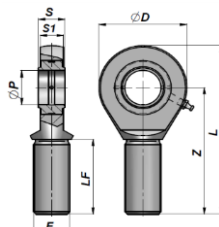


LEDLEJE MED UDV. GEVIND

BALL-JOINT END WITH GREASE NIPPLE

GAR..DO


GAR 6-20 DO/DO2RS



GAR 25-80 DO/DO2RS



Varenr. Code Type DO	Varenr. Code Type DO...2RS	ØP	Z	S	ØD	S1	L	F	LF	FC (kN)	kg
*GAR06DO		6	36	6	21	4.3	46.5	M6x1	18	3,4	0,01
*GAR08DO		8	42	8	24	6	54	M8x1.25	22	5,5	0,03
*GAR10DO		10	48	9	29	7	62.5	M10x1.5	27	8,1	0,05
*GAR12DO		12	54	10	34	8	71	M12x1.75	30	10,8	0,08
**GAR15DO		15	63	12	40	10	83	M14x2	34	17	0,14
**GAR17DO	**GAR17D2	17	69	14	46	11	92	M16x2	36	21,2	0,19
**GAR20DO	**GAR20D2	20	78	16	53	13	104,5	M20x1.5	43	30	0,31
GAR25DO	GAR25D2	25	94	20	64	17	126	M24x2	53	48	0,56
GAR30DO	GAR30D2	30	110	22	73	19	146,5	M30x2	65	62	0,89
GAR35DO	GAR35D2	35	140	25	82	21	181	M36x3	82	80	1,40
GAR40DO	GAR40D2	40	150	28	92	23	196	M39x3	86	100	1,80
GAR45DO	GAR45D2	45	163	32	102	27	218	M42x3	94	127	2,60
GAR50DO	GAR50D2	50	185	35	112	30	241	M45x3	106	156	3,40
GAR60DO	GAR60D2	60	210	44	135	38	277,5	M52x3	115	245	5,90
GAR70DO	GAR70D2	70	235	49	160	42	315	M56x4	125	315	8,20
GAR80DO	GAR80D2	80	270	55	180	47	360	M64x4	140	400	13.10

FC = MAX DYNAMIC LOAD (kN)

* = UDEN SMØRENIPPEL - WITHOUT GREASE NIPPLE

** = SMØREHUL I HOVEDET - LUBRICATING HOLE IN THE HEAD

MATERIALE : STÅL ISO 12240-4 SERIE M

MATERIAL : STEEL ISO 12240-4 SERIES M