



In line carbon steel piston check valves

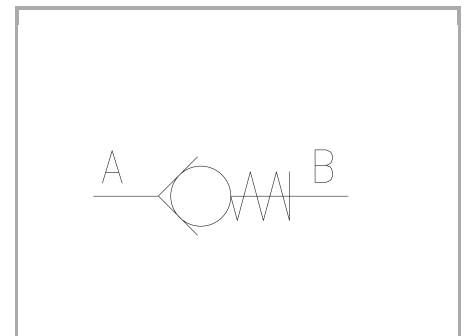
FT 257/6

In line check valves available from 1/8" to 2" bsp. Max. working pressure 400/320 Bar, oil flow rate up to 850 Lt./min (depending on the size). On request NPT THREADS can be supplied

In line

Direct control

Carbon steel



Technical information

Technical description

They are inserted in branches of the circuit where the free flow in one direction is allowed and the return flow in the opposite direction is not possible. A lasting and hermetic seal is ensured by the conical valve poppet, which is a reliable mechanical solution. The spring in high-resistance material is housed in such a way that it does not close as a pack during the opening phase. The external configuration of the body makes it easy to seize the piece during the assembling. They are available with different cracking pressure (0,5 standard and 2-4-6-8-10 bars).

Materials

| | |
|--|--|
| CORPO VALVOLA / BODY VALVE | Acciaio/Steel 11 S Mn Pb 37-UNI EN 10087 |
| VALVOLA DI RITEGNO / CHECK VALVE | Acciaio/Steel 39 Ni Cr Mo 3-UNI EN 10083 |
| MOLLA / SPRING | Acciaio/Steel C 85-UNI EN 10089 |
| FONDELLO FILETTATO / THREADED LOCKING RING | Acciaio/Steel 35 S Mn Pb 10-UNI EN 10087 |

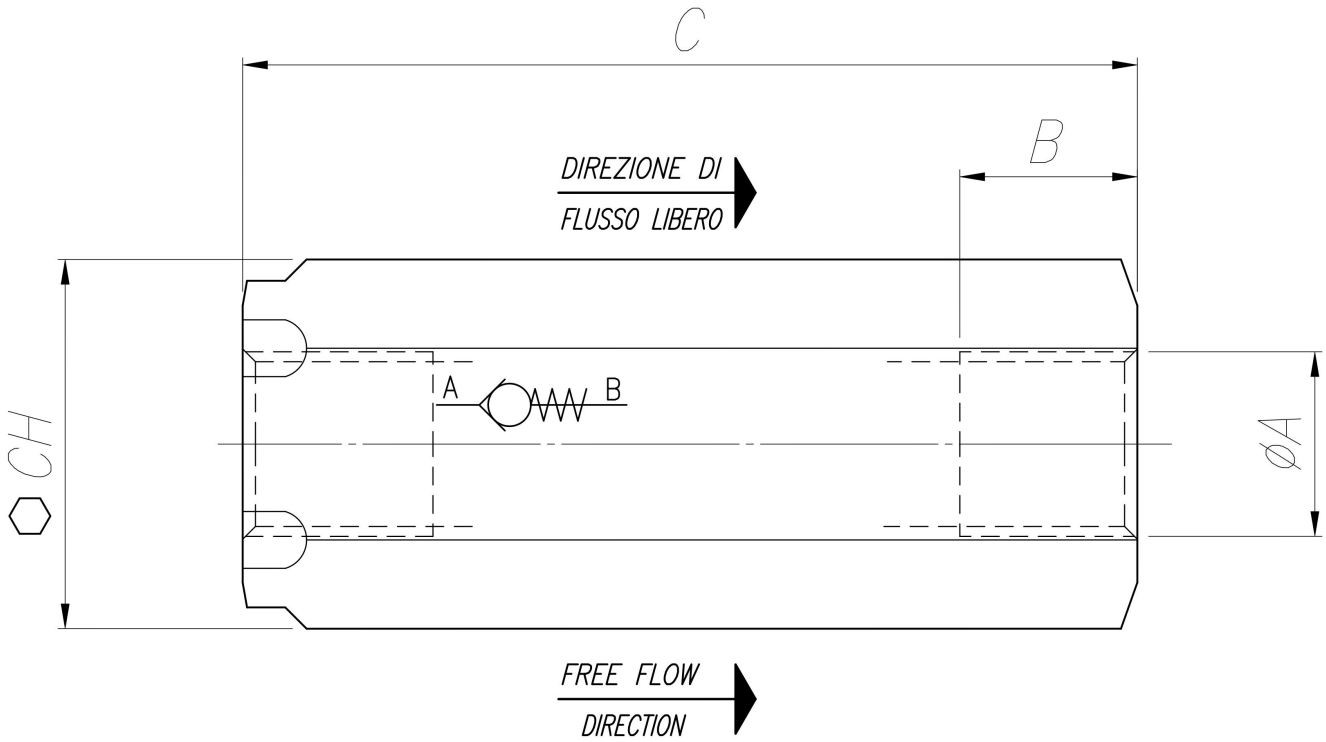


Technical data

| TIPO / TYPE | PRESSIONE ESERCIZIO BAR / WORKING PRESSURE BAR | MIN. PRESSIONE SCOPPIO BAR / MIN. BURSTING PRESSURE BAR | TEMPERATURA ESERCIZIO / WORKING TEMPERATURE | GRADO DI FILTRAZIONE μm / FILTRATION GRADE μm |
|-------------|---|--|--|--|
| 18 | 400 | 1600 | -20°C/+100°C | 25 |
| 14 | 400 | 1600 | -20°C/+100°C | 25 |
| 38 | 400 | 1600 | -20°C/+100°C | 25 |
| 12 | 400 | 1600 | -20°C/+100°C | 25 |
| 34 | 400 | 1600 | -20°C/+100°C | 25 |
| 100 | 320 | 1300 | -20°C/+100°C | 25 |
| 114 | 320 | 1300 | -20°C/+100°C | 25 |
| 112 | 320 | 1300 | -20°C/+100°C | 25 |
| 200 | 320 | 1300 | -20°C/+100°C | 25 |

Dimensional tables and drawings

| TIPO / TYPE | A UNI 338 | B | C | CH | PESO / WEIGHT KG |
|-------------|--------------|------|-------|----|---------------------|
| 18 | 1/8" G | 8,5 | 46 | 17 | 0,075 |
| 14 | 1/4" G | 12,5 | 63 | 22 | 0,165 |
| 38 | 3/8" G | 12,5 | 68 | 27 | 0,26 |
| 12 | 1/2" G | 15,5 | 80,5 | 32 | 0,415 |
| 34 | 3/4" G | 17 | 99,5 | 36 | 0,605 |
| 100 | 1" G | 20 | 117 | 46 | 1,17 |
| 114 | 1 1/4" G | 22 | 134,5 | 55 | 1,85 |
| 112 | 1 1/2" G | 24 | 159 | 65 | 3,13 |
| 200 | 2" G | 27 | 198 | 75 | 4,9 |



Flow rate curves

