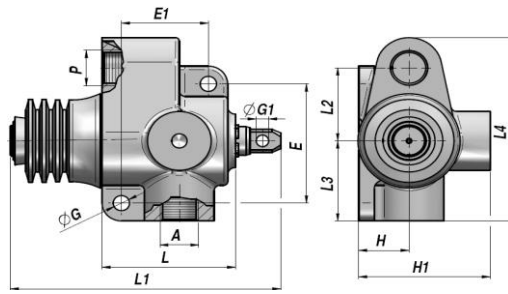
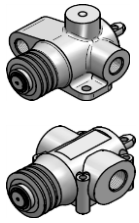
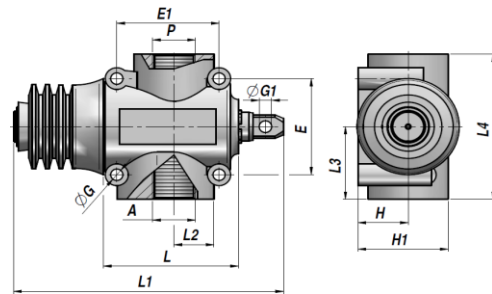


FCR-2T NC

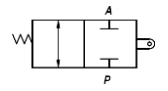
(TIPSTOP VENTIL) ENDESTOP VENTIL - NORMALT LUKKET
END-STROKE VALVE - NORMALLY CLOSED



FCR-2T 3/8" - 1/2"



FCR-2T 3/4"



Varenr. Code	A-P BSP	Q MAX l/min	P MAX bar	Type	L	L1	L2	L3	L4	ØG	ØG1	E	E1	H	H1	kg
V7090.0820	3/8"	60	350	FCR-2T 60-NC 38	69	130	41	45	103	8,5	6.5	66	45	26	68	1,65
V7090.0822	1/2"	80	350	FCR-2T 80-NC 12	69	130	41	45	103	8.5	6.5	66	45	26	68	1,65
V7090.0823	3/4"	120	350	FCR-2T120-NC 34	88	179	23.5	46	92	8,5	13	50	56	27.5	50	2,20

RØRMONTERING
LINE MOUNTING

MATERIALE - MATERIAL : STØBEJERN - CAST IRON