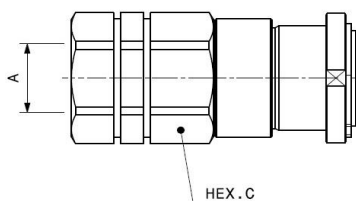


FAP-ZN

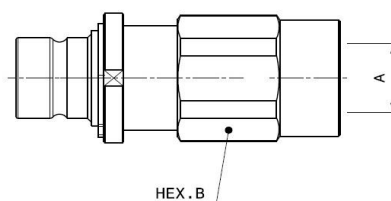
LYNKOBLING "FAP-ZN"
QUICK COUPLING "FAP-ZN"



Hun - Female



Han - Male



Varenr. / Code		Betegnelse Description	A	A / D Type	mm		Weight (kg)	
Hun / Female	Han / Male				B	C	Male	Female
811400024ST	811400025ST	FAP9DZN 1/4 BSP	1/4"	D	27	30		
811400026ST	811400027ST	FAP9AZN 1/4 BSP	1/4"	A	27	30		
811400002ST	811400003ST	FAP9AZN 3/8 BSP	3/8"	A	27	30		
811400004ST	811400005ST	FAP9DZN 3/8 BSP	3/8"	D	27	30		
811400006ST	811400007ST	FAP9AZN 1/2 BSP	1/2"	A	27	30		
811400008ST	811400009ST	FAP9DZN 1/2 BSP	1/2"	D	27	30		
811400010ST	811400011ST	FAP13ZN 1/2 BSP	1/2"		36	36		
811400012ST	811400013ST	FAP13ZN 3/4 BSP	3/4"		36	36		
811400014ST	811400015ST	FAP15ZN 3/4 BSP	3/4"		36	41		
811400020ST	811400021ST	FAP17ZN 3/4 BSP	3/4"		46	46		
811400016ST	811400017ST	FAP17ZN 1 BSP	1"		46	46		
811400022ST	811400023ST	FAP21ZN 1 BSP	1"		55	55		
811400018ST	811400019ST	FAP21ZN 1-1/4 BSP	1 1/4"		55	55		

Standard tætninger - Standard seals: NBR (Nitrile)

Arbejdstemperatur - Working temperature: -20 °C til/to 100 °C

Description	Max. Flow		Hydrostatic pushing area coupled - cm2	Spillage * ml
	l/min	GPM		
FAP9ZN (A/D)	46	12.19	1.226	0.012
FAP13ZN	90	23.85	1.893	0.020
FAP15ZN	148	39.22	2.404	0.110
FAP17ZN	200	53.00	3.298	0.032
FAP21ZN	378	100.17	4.335	0.035

Description	Max. operating pressure								Burst pressure					
	Coupled		Male		Female		Coupled		Male		Female			
	MPa	psi	MPa	psi	MPa	psi	MPa	psi	MPa	psi	MPa	psi		
FAP9ZN (A/D)	35	5075	35	5075	35	5075	120	17400	120	17400	100	14500		
FAP13ZN	33	4785	33	4785	33	4785	120	17400	120	17400	100	14500		
FAP15ZN	33	4785	33	4785	33	4785	120	17400	120	17400	100	14500		
FAP17ZN	33	4785	33	4785	33	4785	120	17400	120	17400	100	14500		
FAP21ZN	30	4350	30	4350	30	4350	100	14500	100	14500	80	11600		

Description	Max. residual pressure during connection						Max. residual pressure during disconnection	
	Male, female to drain		Female, male to drain		Male and female		MPa	psi
	MPa	psi	MPa	psi	MPa	psi		
FAP9ZN (A/D)	25	3625	25	3625	25	3625	25	3625
FAP13ZN	25	3625	25	3625	20	2900	20	2900
FAP15ZN	25	3625	25	3625	20	2900	20	2900
FAP17ZN	25	3625	25	3625	15	2175	15	2175
FAP21ZN	25	3625	25	3625	15	2175	15	2175

* Spillage is an indicative value of the fluid loss per couple-uncouple cycle without residual pressure.

Temperature range:

- Standard seals NBR, PUR, POM: from -20 °C to +100 °C (from -4 °F to +212 °F).

