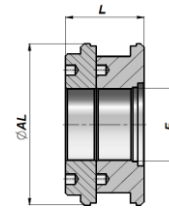


CT



CT30

Series M250

| Varenr. Code | ØAL | ØI - F | L | kg | Kasse Box | Pz Pcs | Pakn.sæt Seal kits |
|-----------------|-----|--------|------|-------|---------------|-----------|-----------------------|
| *CT00030013 | 30 | 13 | 24.7 | 0,02 | Z00CT00030013 | 100 | GKGCT030013 |
| CT00032013 | 32 | 13 | 30 | 0,10 | Z00CT00032013 | 100 | GKGCT032013 |
| CT00032015 | 32 | 15 | 30 | 0,09 | Z00CT00032015 | 100 | GKGCT032015 |
| CT00035015 | 35 | 15 | 40 | 0,16 | Z50CT00035015 | 50 | GKGCT035015 |
| CT00040015 | 40 | 15 | 40 | 0,23 | Z50CT00040015 | 50 | GKGCT040015 |
| CT00045015 | 45 | 15 | 40 | 0,31 | Z50CT00045015 | 50 | GKGCT045015 |
| CT00050015 | 50 | 15 | 40 | 0,36 | Z50CT00050015 | 50 | GKGCT050015 |
| CT00050020 | 50 | 20 | 40 | 0,31 | Z50CT00050020 | 50 | GKGCT050020 |
| CT00055020 | 55 | 20 | 40 | 0,42 | Z25CT00055020 | 25 | GKGCT055020 |
| CT00060020 | 60 | 20 | 50 | 0,71 | Z25CT00060020 | 25 | GKGCT060020 |
| CT00060024 | 60 | 24 | 45 | 0,56 | Z25CT00060024 | 25 | GKGCT060024 |
| CT00060027 | 60 | 27 | 50 | 0,61 | Z25CT00060027 | 25 | GKGCT060027 |
| CT00063020 | 63 | 20 | 50 | 0,81 | Z25CT00063020 | 25 | GKGCT063020 |
| CT00063024 | 63 | 24 | 45 | 0,65 | Z25CT00063024 | 25 | GKGCT063024 |
| CT00065020 | 65 | 20 | 50 | 0,88 | Z25CT00065020 | 25 | GKGCT065020 |
| CT00065024 | 65 | 24 | 45 | 0,72 | Z25CT00065024 | 25 | GKGCT065024 |
| CT00070020 | 70 | 20 | 50 | 0,94 | Z25CT00070020 | 25 | GKGCT070020 |
| CT00070024 | 70 | 24 | 45 | 0,78 | Z25CT00070024 | 25 | GKGCT070024 |
| CT00070027 | 70 | 27 | 50 | 0,83 | Z25CT00070027 | 25 | GKGCT070027 |
| CT00075024 | 75 | 24 | 45 | 0,95 | Z20CT00075024 | 20 | GKGCT075024 |
| CT00075027 | 75 | 27 | 50 | 1,00 | Z20CT00075027 | 20 | GKGCT075027 |
| CT00080024 | 80 | 24 | 45 | 1,11 | Z20CT00080024 | 20 | GKGCT080024 |
| CT00080027 | 80 | 27 | 50 | 1,23 | Z20CT00080027 | 20 | GKGCT080027 |
| CT00085024 | 85 | 24 | 45 | 1,30 | Z10CT00085024 | 10 | GKGCT085024 |
| CT00085027 | 85 | 27 | 50 | 1,43 | Z10CT00085027 | 10 | GKGCT085027 |
| CT00090027 | 90 | 27 | 50 | 1,66 | Z10CT00090027 | 10 | GKGCT090027 |
| CT00090033 | 90 | 33 | 50 | 1,55 | Z10CT00090033 | 10 | GKGCT090033 |
| CT00100027 | 100 | 27 | 50 | 2,06 | Z10CT00100027 | 10 | GKGCT100027 |
| CT00100033 | 100 | 33 | 50 | 1,95 | Z10CT00100033 | 10 | GKGCT100033 |
| CT00110033 | 110 | 33 | 50 | 2,49 | Z10CT00110033 | 10 | GKGCT110033 |
| CT00110040 | 110 | 40 | 50 | 2,33 | Z10CT00110040 | 10 | GKGCT110040 |
| CT00120040 | 120 | 40 | 50 | 2,95 | Z06CT00120040 | 6 | GKGCT120040 |
| CT00125040 | 125 | 40 | 50 | 3,19 | Z06CT00125040 | 6 | GKGCT125040 |
| CT00140040 | 140 | 40 | 58 | 5,07 | | | GKGCT140040 |
| CT00150040 | 150 | 40 | 58 | 5,97 | | | GKGCT150040 |
| CT00160051 | 160 | 51 | 58 | 6,60 | | | GKGCT160051 |
| CT30 | | | | | | | |
| CT11180080 | 180 | M80x2 | 82 | 9,80 | | | GKG11180F80 |
| CT11200080 | 200 | M80x2 | 82 | 13,00 | | | GKG11200F80 |
| CT11250080 | 250 | M98x2 | 82 | 21,70 | | | GKG11250F98 |

MATERIALE : STÅL 95Mn28 - UNI C40 - * = ALUMINIUM UNI 2011-115

MATERIAL : STEEL 95Mn28 - UNI C40 - * = ALUMINIUM UNI 2011-115