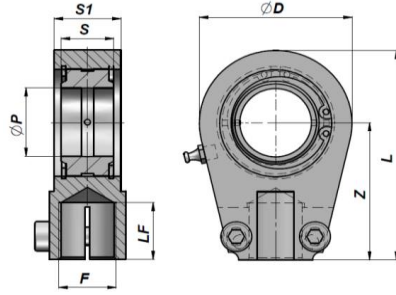


LED-LEJE MED GEVIND

BALL-JOINT END WITH GREASE NIPPLE

CSTAPR...U



| Varenr. Code | ØP | Z | S | ØD | S1 | L | F | LF | FC (kN) | kg |
|-----------------|-----|-----|----|-----|----|-------|---------|-----|--------------|-------|
| CSTAPR020U | 20 | 50 | 16 | 56 | 19 | 80 | M16x1.5 | 17 | 30 | 0,44 |
| CSTAPR025U | 25 | 50 | 20 | 56 | 23 | 80 | M16x1.5 | 17 | 48 | 0,47 |
| CSTAPR030U | 30 | 60 | 22 | 64 | 28 | 94 | M22x1.5 | 23 | 62 | 0,77 |
| CSTAPR035U | 35 | 70 | 25 | 78 | 30 | 112 | M28x1.5 | 29 | 80 | 1,24 |
| CSTAPR040U | 40 | 85 | 28 | 94 | 35 | 135 | M35x1.5 | 36 | 100 | 2,12 |
| CSTAPR050U | 50 | 105 | 35 | 116 | 40 | 168 | M45x1.5 | 46 | 156 | 3,74 |
| CSTAPR060U | 60 | 130 | 44 | 130 | 50 | 200 | M58x1.5 | 59 | 245 | 6,49 |
| CSTAPR070U | 70 | 150 | 49 | 154 | 55 | 232 | M65x1.5 | 66 | 315 | 9,88 |
| CSTAPR080U | 80 | 170 | 55 | 176 | 60 | 265 | M80x2 | 81 | 400 | 14.20 |
| CSTAPR090U (**) | 90 | 210 | 60 | 206 | 65 | 322 | M100x2 | 101 | 490 | 20.00 |
| CSTAPR100U (**) | 100 | 235 | 70 | 231 | 70 | 360 | M110x2 | 111 | 610 | 27.50 |
| CSTAPR110U (**) | 110 | 265 | 70 | 266 | 80 | 407.5 | M120x3 | 125 | 655 | 45.60 |
| CSTAPR120U (**) | 120 | 310 | 85 | 340 | 90 | 490 | M130x3 | 135 | 950 | 72.00 |

FC = MAX DYNAMIC LOAD (Kn)

MATERIALE : STÅL ISO 12240-1 SERIE E - (**) = STØBEJERN

MATERIAL : STEEL ISO 12240-1 SERIES E - (**) = NODULAR CAST IRON