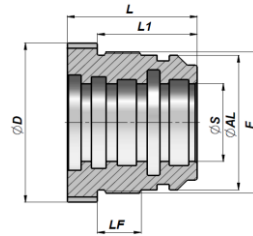




Series P350



Varenr. Code	ØAL	ØS	ØD	F	LF	L	L1	kg	Kasse Box		Pz Pcs	Pakn.sæt Seal kits	
CGPM065050025	50	25	64	M54x1.5	22	55	45	0,66	Z25CGPM050025		25	GKGC	CGPM050025
CGPM065050030	50	30	"	"	"	"	"	0,55	Z25CGPM050030		25	GKGC	CGPM050030
CGPM065050035	50	35	"	"	"	"	"	0,41	Z25CGPM050035		25	GKGC	CGPM050035
CGPM075060030	60	30	74	M64x1.5	22	60	48	0,99	Z20CGPM060030		20	GKGC	CGPM060030
CGPM075060035	60	35	"	"	"	"	"	0,86	Z20CGPM060035		20	GKGC	CGPM060035
CGPM075060040	60	40	"	"	"	"	"	0,70	Z20CGPM060040		20	GKGC	CGPM060040
CGPM080063035	63	35	78	M68x1.5	22	60	48	1,04	Z10CGPM063035		10	GKGC	CGPM063035
CGPM080063040	63	40	"	"	"	"	"	0,88	Z10CGPM063040		10	GKGC	CGPM063040
CGPM085070035	70	35	84	M74x1.5	22	65	50	1,48	Z05CGPM070035		5	GKGC	CGPM070035
CGPM085070040	70	40	"	"	"	"	"	1,27	Z05CGPM070040		5	GKGC	CGPM070040
CGPM100080040	80	40	94	M85x2	25	75	60	2,18	Z05CGPM080040		5	GKGC	CGPM080040
CGPM100080045	80	45	"	"	"	"	"	1,95	Z05CGPM080045		5	GKGC	CGPM080045
CGPM100080050	80	50	"	"	"	"	"	1,70	Z05CGPM080050		5	GKGC	CGPM080050
CGPM110090045	90	45	109	M95x2	25	75	60	2,80	Z05CGPM090045		5	GKGC	CGPM090045
CGPM110090050	90	50	"	"	"	"	"	2,57	Z05CGPM090050		5	GKGC	CGPM090050
CGPM110090060	90	60	"	"	"	"	"	2,00	Z05CGPM090060		5	GKGC	CGPM090060
CGPM120100045	100	45	119	M105x2	25	75	60	3,80	Z05CGPM100045		5	GKGC	CGPM100045
CGPM120100050	100	50	"	"	"	"	"	3,45	Z05CGPM100050		5	GKGC	CGPM100050
CGPM120100060	100	60	"	"	"	"	"	2,90	Z05CGPM100060		5	GKGC	CGPM100060
CGPM130110050	110	50	129	M115x2	30	85	70	5,00	Z03CGPM110050		3	GKGC	CGPM110050
CGPM130110060	110	60	"	"	"	"	"	4,42	Z03CGPM110060		3	GKGC	CGPM110060
CGPM140120060	120	60	139	M125x2	30	85	70	5,70	Z02CGPM120060		2	GKGC	CGPM120060
CGPM140120070	120	70	"	"	"	"	"	4,90	Z02CGPM120070		2	GKGC	CGPM120070
CGPM140120080	120	80	"	"	"	"	"	3,96	Z02CGPM120080		2	GKGC	CGPM120080
CGPM145125070	125	70	144	M130x2	39	90	75	5,99	Z02CGPM125070		2	GKGC	CGPM125070
CGPM145125080	125	80	"	"	"	"	"	4,95	Z02CGPM125080		2	GKGC	CGPM125080
CGPM160140080	140	80	159	M145x2	40	90	75	7,20				GKGC	CGPM140080
CGPM160140090	140	90	"	"	"	"	"	6,21				GKGC	CGPM140090
CGPM160140100	140	100	"	"	"	"	"	5,00				GKGC	CGPM140100
CGPM170150080	150	80	169	M155x2	46	100	85	9,85				GKGC	CGPM150080
CGPM170150090	150	90	"	"	"	"	"	8,73				GKGC	CGPM150090
CGPM170150100	150	100	"	"	"	"	"	7,49				GKGC	CGPM150100
CGPM180160100	160	100	179	M165x2	46	100	85	9,40				GKGC	CGPM160100
CGPM180160120	160	120	"	"	"	"	"	6,40				GKGC	CGPM160120
CGPM215180100	180	100	215	M188x2.5	60	125	107	18.06				GKGC	CGPM180100
CGPM215180120	180	120	"	"	"	"	"	14.35				GKGC	CGPM180120
CGPM225200100	200	100	225	M208x2.5	60	125	107	23.61				GKGC	CGPM200100
CGPM225200120	200	120	"	"	"	"	"	19.92				GKGC	CGPM200120
CGPM225200140	200	140	"	"	"	"	"	16.03				GKGC	CGPM200140
CGPM245220120	220	120	245	M228x2.5	65	130	112	27.82				GKGC	CGPM220120
CGPM245220140	220	140	"	"	"	"	"	23.78				GKGC	CGPM220140
CGPM275250150	250	150	275	M258x2.5	80	150	130	37.42				GKGC	CGPM250150
CGPM275250180	250	180	"	"	"	"	"	27.73				GKGC	CGPM250180
CGPM335300150	300	150	335	M308x3	95	180	155	77.05				GKGC	CGPM300150
CGPM335300180	300	180	"	"	"	"	"	65.48				GKGC	CGPM300180

MATERIALE : STÅL UNI C40  
MATERIAL : STEEL UNI C40