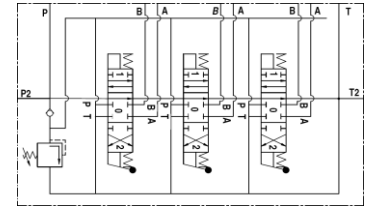
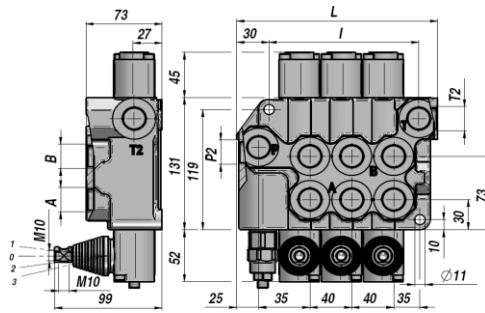
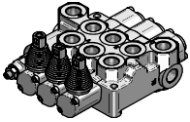


MANØVRE VENTILER - MONOBLOCK VALVES

BM 100

Qn 90 l/min
Q MAX 100 l/min

**MANØVRE VENTIL
MONOBLOCK VALVE**



Varenr. Code	Type	N° sektioner Sections No.	Gevind - Threads					PN bar	P MAX U bar	P MAX S bar	L	I	kg
			A-B BSP	P BSP	T BSP	P2 BSP	T2 BSP						
DBM5111001	BM100/1/GU/MO A1	1									115	66	4,70
DBM5211001	BM100/2/GU/MO A1 x 2	2	3/4"	3/4"	3/4"	3/4"	3/4"	250	320	80	155	106	7,20
DBM5311001	BM100/3/GU/MO A1 x 3	3									195	146	9,50

PN = Max. arbejdsdruk - Nominal pressure

P MAX U = Max. spidsbelastning - Max. pressure on ports

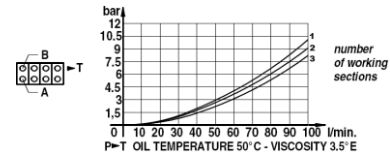
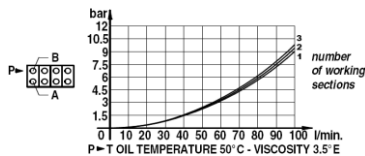
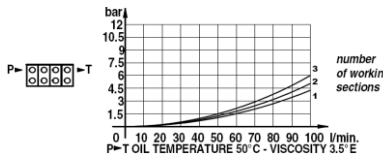
P MAX S = Max. returtryk - Max. pressure in tank-line

Overtryksventil - Relief Valve: X=30:90bar (70) - U=80:230bar (140) (Standard) - K=150:300bar (200)

OVENSTÅENDE VARENUMRE BESTÅR AF - THESE CODES REFER TO:

DOBBELTVIRKENDE - 3 POSITIONER - FJEDER RETUR - A/B PORTE LUKKET - BSP GEVIND - FORBEREDT FOR TRYKVIDEREFØRING

DOUBLE ACTING TYPE - 3 POSITIONS - SPRING RETURN - A/B PORTS CLOSED - BSP THREADS - MACHINED FOR CARRY-OVER



SPOLE TYPE SPOOL TYPE	
A	
B	
C	
D	
L	
Z	

POSITIONER SPOOL CONTROL	
1	
2	
3	
6	
7	
8	
12	
42	

PÅ FORESPØRGSEL ON REQUEST	
MC	manual operator with cam
DO	cam operator
JS	joystick
1P	luftstyret pneumatic operator
HO	hydraulisk styret hydraulic operator
MSW	microswitch
CO	Trykvidereføring power beyond (carry over)
CCP	Prop for lukket center closed center plug