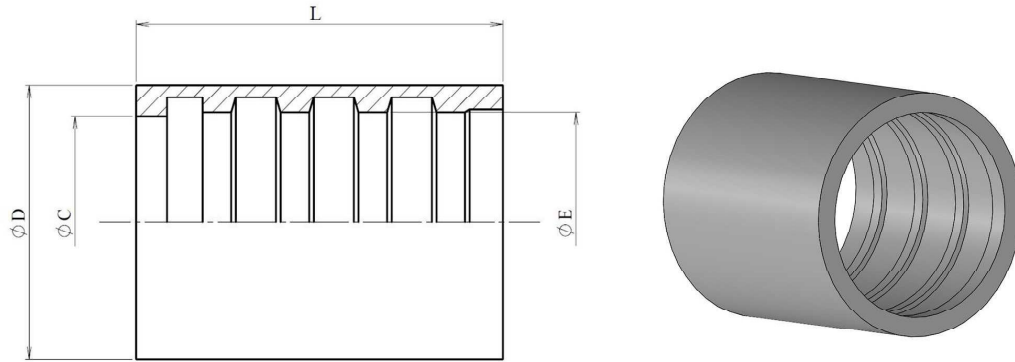


## Ferrules for smooth PTFE

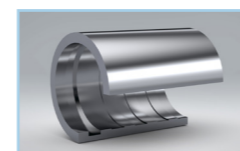
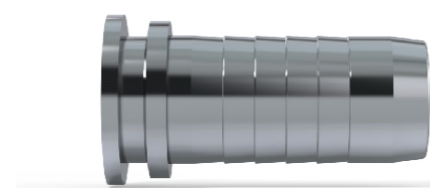
Stainless Steel AISI 316-L



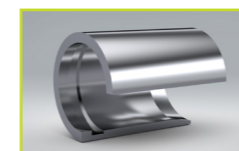
Part n°	DN	L	ØC	ØD	ØE
<b>810400100</b>	1/8"	17,5	7	12	8
<b>810400300</b>	3/16"	26	8,5	14	10
<b>810400400</b>	1/4"	30	10,7	15	11
<b>810400500</b>	5/16"	30	12,8	17	13,5
<b>810400600</b>	3/8"	30	14	18	14
<b>810400800</b>	1/2"	32	18,6	24	19,3
<b>810401000</b>	5/8"	36	21,5	28	22
<b>810401200</b>	3/4"	40	24,4	30	24,9
<b>810401600</b>	1"	50	30,3	36	30,3

Oplysninger indsamlet i dette tekniske dokument har en informativ karakter og kan ændres uden forudgående varsel.  
Hydra Comp AS accepterer ikke nogen form for ansvar i form af uheldig brug af produkt, undtagen dem, der er relateret til fabriktionsfejl.

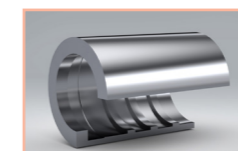
			DN3	1/8"	DN5	3/16"	DN6	1/4"	DN8	5/16"	DN10	3/8"	DN12	1/2"	DN16	5/8"	DN19	3/4"	DN25	1"	DN31	1" 1/4"	DN38	1" 1/2"	DN51	2"	DN63	2" 1/2"				
	<b>M2900</b>	<b>SAE 100 R14 PTFE FHL</b>		M290003	M290005	M290006	M290008	M290009	M290013	M290016	M290020	M290025																				
				810400100	810400300	810400400	810400500	810400600	810400800	810401000	810401200	810401600																				
				<b>9,5</b>	<b>11,5</b>	<b>13</b>	<b>13,8</b>	<b>15,5</b>	<b>20,5</b>	<b>23,5</b>	<b>27</b>	<b>34</b>																				
						880400400	880400500	880400600	880400800																							
							<b>12,1</b>	<b>13,8</b>	<b>16,2</b>	<b>20,3</b>																						
	<b>M29012</b>	<b>PTFE FHM 2 MALLAS 2 BRAIDS</b>				M2901206	M2901208	M2901209	M2901213	M2901216	M2901219	M2901225																				
						810450400	810140500	810450600	810400800	810401000	810141200	810141600																				
							<b>11,7</b>	<b>14,6</b>	<b>17</b>	<b>20,7</b>	<b>25,2</b>	<b>27,5</b>	<b>33</b>																			
	<b>M2920</b>	<b>PTFE CORRUGADO CONVOLUTED</b>				M292006	M292008	M292009	M292013	M292016	M292020	M292025	M292032	M292038	M292050	M292065																
						810410400	810410500	810410600	810410800	810411000	810411201	810411600	810412000	810412400	810413200	810414000																
							<b>12,2</b>	<b>14</b>	<b>16,8</b>	<b>20,2</b>	<b>24</b>	<b>26,3</b>	<b>34</b>	<b>39</b>	<b>48,2</b>	<b>60,2</b>	<b>74</b>															
						880410400		880410600	880410800	880411000	880411201																					
							<b>12,1</b>		<b>17</b>	<b>20,2</b>	<b>24</b>	<b>26,3</b>																				
	<b>M2930</b>	<b>PTFE ANTIESTÁTICO CORRUGADO ANTISTATIC CONVOLUTED</b>							M293009	M293013		M293020	M293025																			
										810410600	810410800		810411201	810411600																		
										<b>16,8</b>	<b>20,2</b>		<b>26,3</b>	<b>34</b>																		
	<b>M2980</b>	<b>PTFE FIBRA CORRUGADO CONVOLUTED FIBER</b>							M298009	M298013		M298020	M298025	M298032																		
										810410600	810410800		810411201	810411600	810412000																	
										<b>16,8</b>	<b>20,2</b>		<b>26,3</b>	<b>34</b>	<b>39</b>																	
	<b>M2940</b>	<b>PTFLEX</b>															M294020	M294025	M294032													
																		810411201	810411600	810412000												
																		<b>25,5</b>	<b>33,5</b>	<b>39</b>												



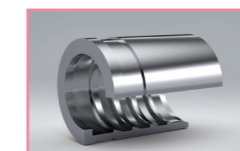
81040



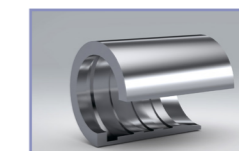
88040



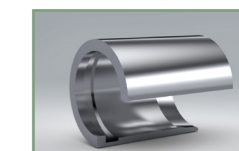
81045



81014



81041



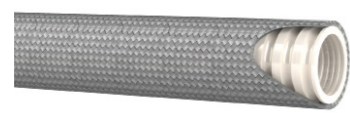
88041




Los datos que aparecen son recomendados para nuestras mangueras TRALE. Las dimensiones indicadas son mm. Para consultar Ø de manguera ver tabla dimensional de mangueras.

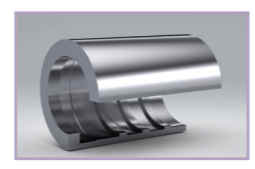
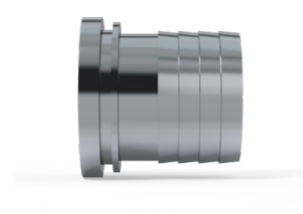
manguera / hose

casquillo / ferrule

Ø prensado / crimping (mm.)





		DN25	1"	DN31	1" 1/4	DN38	1" 1/2	DN51	1" 1/2
<b>M2920</b>	<b>PTFE CORRUGADO</b>		M292025	M292032	M292038	M292050			
			810501600	810502000	810502400	810503200			
			<b>34,5</b>	<b>42,5</b>	<b>48,7</b>	<b>61,5</b>			




**81050**

Los datos que aparecen son recomendados para nuestras mangueras TRALE. Las dimensiones indicadas son mm. Para consultar Ø de manguera ver tabla dimensional de mangueras.

 manguera / hose

 casquillo / ferrule

 Ø prensado / crimping (mm.)