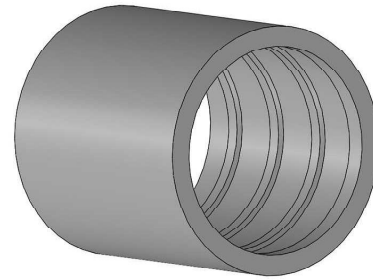
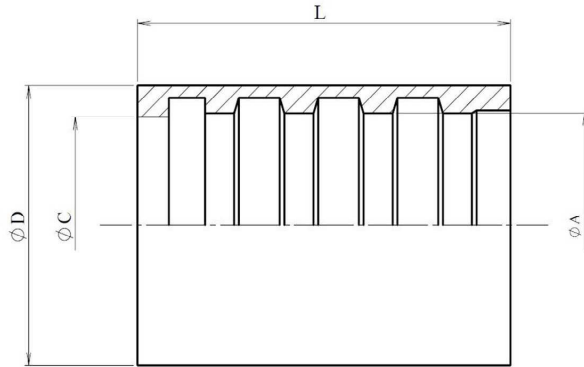


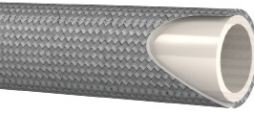





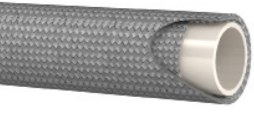



















Ferrules for Smooth PTFE SAE 100 R14

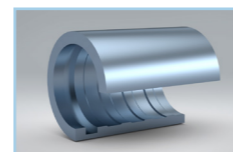
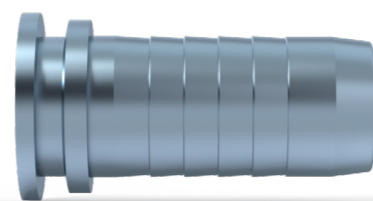
Mild Steel 1.0737 (EN 10.277-3)



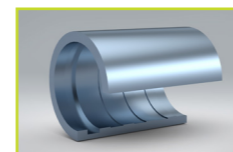
Part n°	DN	L	ØA	ØC	ØD
210400100	1/8"	17,5	8	7	12
210400300	3/16"	26	10	8,8	14
210400400	1/4"	30	11	10,7	15
210400500	5/16"	30	13,5	12,8	17
210400600	3/8"	30	14	14	18
210400800	1/2"	32	19,3	18,6	24
210401000	5/8"	36	22	21,5	28
210401200	3/4"	40	24,9	24,4	30
210401600	1"	50	30,3	30,3	36

Oplysninger indsamlet i dette tekniske dokument har en informativ karakter og kan ændres uden forudgående varsel.
Hydra Comp AS accepterer ikke nogen form for ansvar i form af u hensigtsmæssig brug af produkt, undtagen dem, der er relateret til fabriktionsfejl.

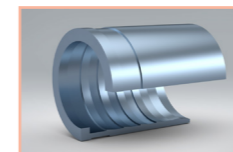
			DN5	3/16"	DN6	1/4"	DN8	5/16"	DN10	3/8"	DN12	1/2"	DN16	5/8"	DN19	3/4"	DN25	1"	DN31	1" 1/4	DN38	1" 1/2	DN51	2"	DN63	2" 1/2		
	M2900	SAE 100 R14 PTFE FHL		M290005	M290006	M290008	M290009	M290013	M290016	M290020	M290025																	
				210400300	210400400	210400500	210400600	210400800	210401000	210401200	210401600																	
				11,5	13	13,8	15,5	20,5	23,5	27	34																	
					280400400	280400500	280400600	280400800																				
					12,1	13,8	16,2	20,3																				
	M29012	PTFE FHM 2 MALLAS 2 BRAIDS			M2901206	M2901208	M2901209	M2901213	M2901216	M2901219	M2901225																	
					210450400	DI2300500	210450600	210400800	210401000	DI2301200	DI2301600																	
					210410400		210410600																					
																												
					12	14,6	17	20,7	25,2	27	33,5																	
	M2920	PTFE CORRUGADO CONVOLUTED			M292006	M292008	M292009	M292013	M292016	M292020	M292025	M292032	M292038	M292050	M292065													
					210410400	210410500	210410600	210410800	210411000	210411201	210411600	210412001	210412400	210413200	210414000													
					12,2	14	16,5	20,2	24	26,7	34	39	48,2	60,2	74													
					280410400		280410600	280410800	280411000	280411201																		
					12,1		17	20,2	24	26,3																		
	M2930	PTFE CORRUGADO ANTIESTÁTICO CONVOLUTED ANTISTATIC					M293009	M293013		M293020	M293025																	
							210410600	210410800		210411201	210411600																	
							16,5	20,2		26,7	34																	
	M2980	PTFE FIBRA CORRUGADO CONVOLUTED FIBER					M298009	M298013		M298020	M298025	M298032																
							210410600	210410800		210411201	210411600	210412001																
							16,5	20,2		26,7	34	39																



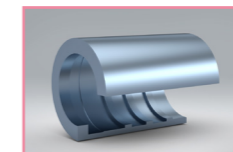
21040



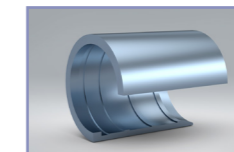
28040



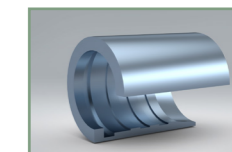
DI23



21045





21041




28041

Los datos que aparecen son recomendados para nuestras mangueras TRALE. Las dimensiones indicadas son mm. Para consultar Ø de manguera ver tabla dimensional de mangueras.

 manguera / hose

 casquillo / ferrule

 Ø prensado / crimping (mm.)